

Product datasheet for **TA349941**

Estrogen Related Receptor gamma (ESRRG) Rabbit Polyclonal Antibody

Product data:

Product Type:	Primary Antibodies
Applications:	IHC, WB
Recommended Dilution:	WB: 500-2000 WB positive control: Mouse lung tissue IHC: 50-200 Positive control: Human gastric cancer Predicted cell location: Cytoplasm
Reactivity:	Human, Mouse, Rat
Host:	Rabbit
Isotype:	IgG
Clonality:	Polyclonal
Immunogen:	Fusion protein of human ESRRG
Formulation:	pH7.4 PBS, 0.05% NaN ₃ , 40% Glycerol
Concentration:	lot specific
Purification:	Antigen affinity purification
Conjugation:	Unconjugated
Storage:	Store at -20°C as received.
Stability:	Stable for 12 months from date of receipt.
Predicted Protein Size:	51 kDa
Gene Name:	estrogen related receptor gamma
Database Link:	NP_001429 Entrez Gene 26381 Mouse Entrez Gene 360896 Rat Entrez Gene 2104 Human P62508



[View online »](#)

Background:

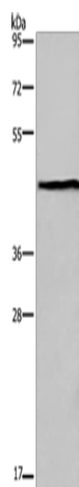
This gene encodes a member of the estrogen receptor-related receptor (ESRR) family, which belongs to the nuclear hormone receptor superfamily. All members of the ESRR family share an almost identical DNA binding domain, which is composed of two C4-type zinc finger motifs. The ESRR members are orphan nuclear receptors; they bind to the estrogen response element and steroidogenic factor 1 response element, and activate genes controlled by both response elements in the absence of any ligands. The ESRR family is closely related to the estrogen receptor (ER) family. They share target genes, co-regulators and promoters, and by targeting the same set of genes, the ESRRs seem to interfere with the ER-mediated estrogen response in various ways.

Synonyms:

ERR3; ERRgamma; NR3B3

Protein Families:

Druggable Genome, Nuclear Hormone Receptor, Transcription Factors

Product images:


Gel: 8%SDS-PAGE

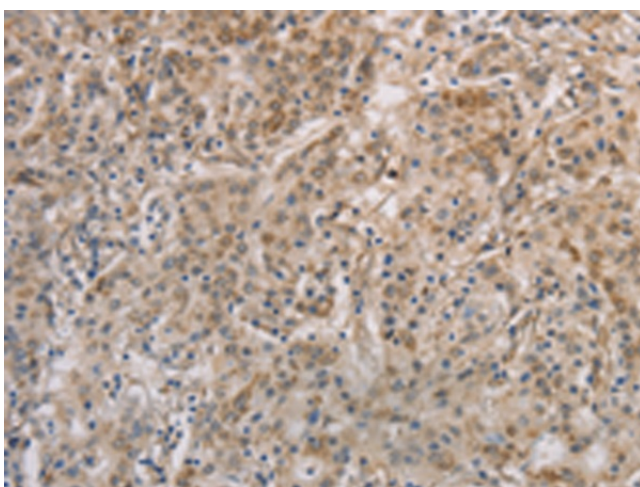
Lysate: 40 µg

Lane: Mouse lung tissue

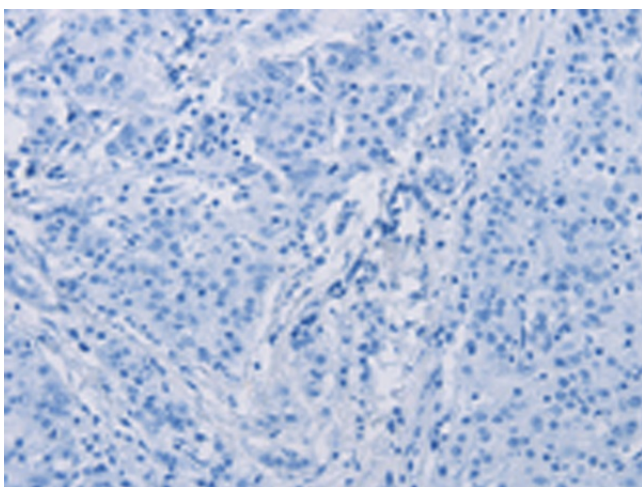
Primary antibody: TA349941 (ESRRG Antibody) at dilution 1/300

Secondary antibody: Goat anti rabbit IgG at 1/8000 dilution

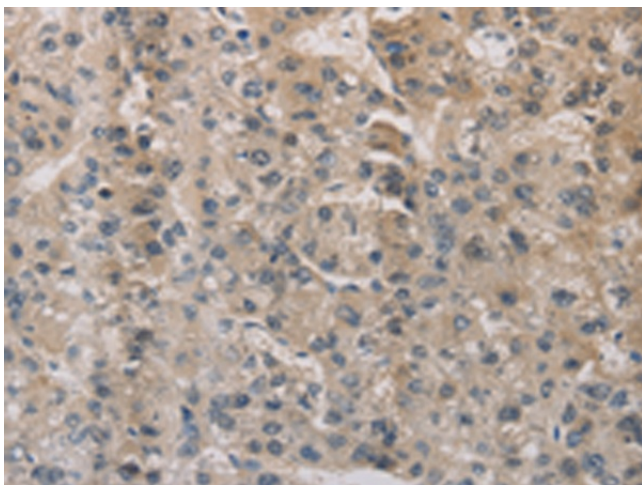
Exposure time: 40 seconds



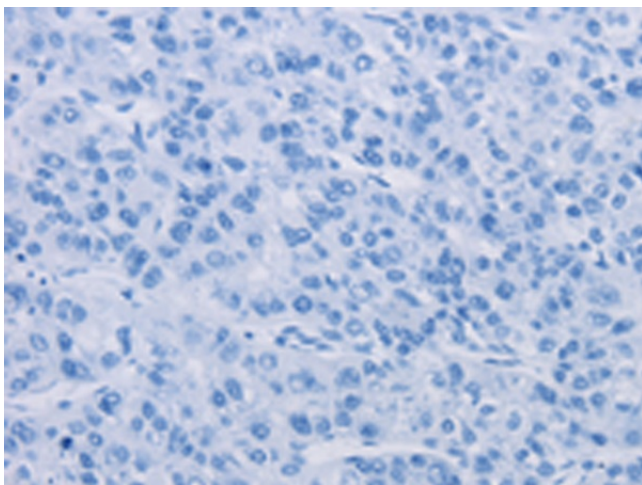
Immunohistochemistry of paraffin-embedded Human gastric cancer tissue using TA349941 (ESRRG Antibody) at dilution 1/30 (Original magnification: ×200)



Immunohistochemistry of paraffin-embedded Human gastric cancer tissue using TA349941 (ESRRG Antibody) at dilution 1/30, treated with fusion protein. (Original magnification: $\times 200$)



Immunohistochemistry of paraffin-embedded Human liver cancer tissue using TA349941 (ESRRG Antibody) at dilution 1/30 (Original magnification: $\times 200$)



Immunohistochemistry of paraffin-embedded Human liver cancer tissue using TA349941 (ESRRG Antibody) at dilution 1/30, treated with fusion protein. (Original magnification: $\times 200$)