

## Product datasheet for **TA349897**

### DNA Ligase I (LIG1) Rabbit Polyclonal Antibody

#### Product data:

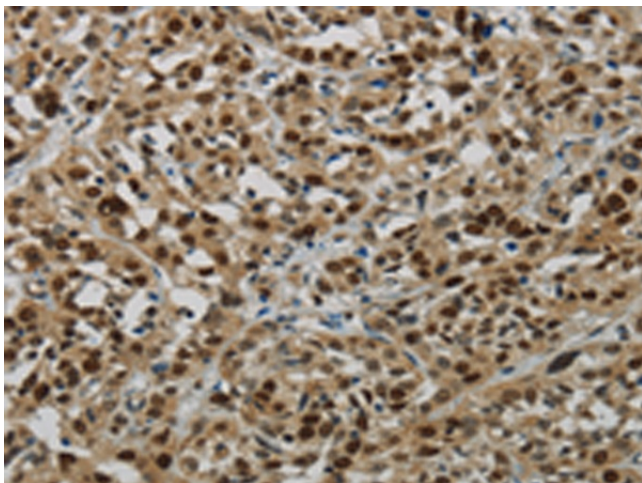
Product Type:	Primary Antibodies
Applications:	IHC
Recommended Dilution:	IHC: 100-300 Positive control: Human esophagus cancer Predicted cell location: Nucleus
Reactivity:	Human, Mouse, Rat
Host:	Rabbit
Isotype:	IgG
Clonality:	Polyclonal
Immunogen:	Fusion protein of human LIG1
Formulation:	pH7.4 PBS, 0.05% NaN <sub>3</sub> , 40% Glycerol
Concentration:	lot specific
Purification:	Antigen affinity purification
Conjugation:	Unconjugated
Storage:	Store at -20°C as received.
Stability:	Stable for 12 months from date of receipt.
Gene Name:	DNA ligase 1
Database Link:	<a href="#">NP_000225</a> <a href="#">Entrez Gene 16881 Mouse</a> <a href="#">Entrez Gene 81513 Rat</a> <a href="#">Entrez Gene 3978 Human</a> <a href="#">P18858</a>
Background:	This gene encodes a member of the ATP-dependent DNA ligase protein family. The encoded protein functions in DNA replication, recombination, and the base excision repair process. Mutations in this gene that lead to DNA ligase I deficiency result in immunodeficiency and increased sensitivity to DNA-damaging agents. Disruption of this gene may also be associated with a variety of cancers. Alternative splicing results in multiple transcript variants.
Synonyms:	MGC117397; MGC130025
Protein Families:	Druggable Genome



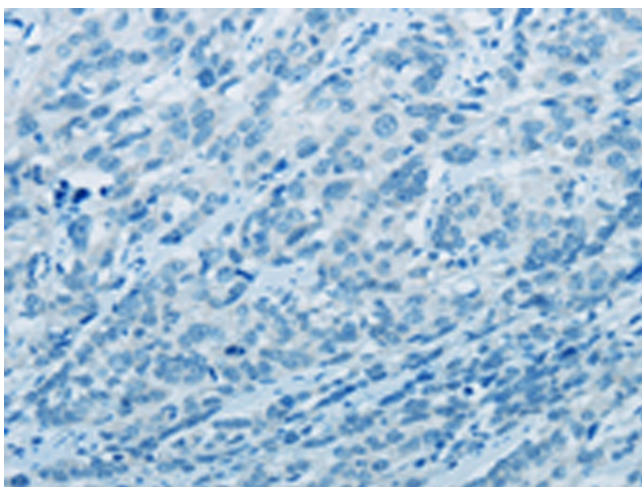
[View online »](#)

Protein Pathways: Base excision repair, DNA replication, Mismatch repair, Nucleotide excision repair

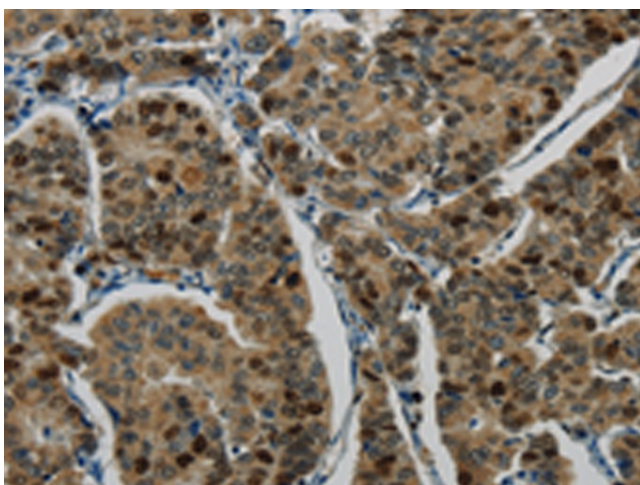
**Product images:**



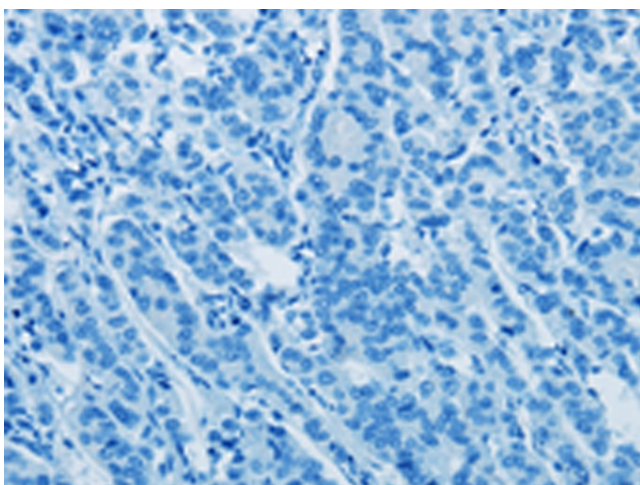
Immunohistochemistry of paraffin-embedded Human esophagus cancer tissue using TA349897 (LIG1 Antibody) at dilution 1/70 (Original magnification:  $\times 200$ )



Immunohistochemistry of paraffin-embedded Human esophagus cancer tissue using TA349897 (LIG1 Antibody) at dilution 1/70, treated with fusion protein. (Original magnification:  $\times 200$ )



Immunohistochemistry of paraffin-embedded Human breast cancer tissue using TA349897 (LIG1 Antibody) at dilution 1/70 (Original magnification:  $\times 200$ )



Immunohistochemistry of paraffin-embedded Human breast cancer tissue using TA349897 (LIG1 Antibody) at dilution 1/70, treated with fusion protein. (Original magnification:  $\times 200$ )