

## Product datasheet for **TA349798**

### **hCG (CGA) Rabbit Polyclonal Antibody**

#### **Product data:**

<b>Product Type:</b>	Primary Antibodies
<b>Applications:</b>	IHC, WB
<b>Recommended Dilution:</b>	WB: 500-2000 WB positive control: HepG2 and 231 cell lysates IHC: 50-200 Positive control: Human breast cancer Predicted cell location: Cytoplasm
<b>Reactivity:</b>	Human
<b>Host:</b>	Rabbit
<b>Isotype:</b>	IgG
<b>Clonality:</b>	Polyclonal
<b>Immunogen:</b>	Fusion protein of human CGA
<b>Formulation:</b>	pH7.4 PBS, 0.05% NaN <sub>3</sub> , 40% Glycerol
<b>Concentration:</b>	lot specific
<b>Purification:</b>	Antigen affinity purification
<b>Conjugation:</b>	Unconjugated
<b>Storage:</b>	Store at -20°C as received.
<b>Stability:</b>	Stable for 12 months from date of receipt.
<b>Gene Name:</b>	glycoprotein hormones, alpha polypeptide
<b>Database Link:</b>	<a href="#">NP_000726</a> <a href="#">Entrez Gene 1081 Human</a> <a href="#">P01215</a>



[View online »](#)

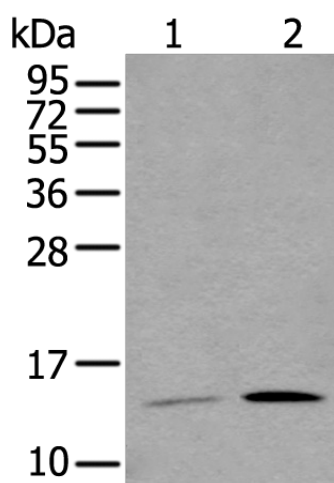
**Background:** The four human glycoprotein hormones chorionic gonadotropin (CG), luteinizing hormone (LH), follicle stimulating hormone (FSH), and thyroid stimulating hormone (TSH) are dimers consisting of alpha and beta subunits that are associated noncovalently. The alpha subunits of these hormones are identical, however, their beta chains are unique and confer biological specificity. The protein encoded by this gene is the alpha subunit and belongs to the glycoprotein hormones alpha chain family. Two transcript variants encoding different isoforms have been found for this gene.

**Synonyms:** CG-ALPHA; FSHA; GPHa; GPHA1; HCG; LHA; TSHA

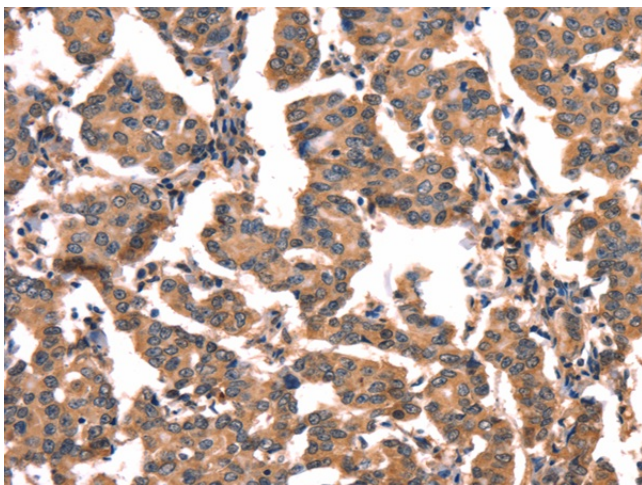
**Protein Families:** Druggable Genome, ES Cell Differentiation/IPS, Secreted Protein

**Protein Pathways:** Autoimmune thyroid disease, GnRH signaling pathway, Neuroactive ligand-receptor interaction

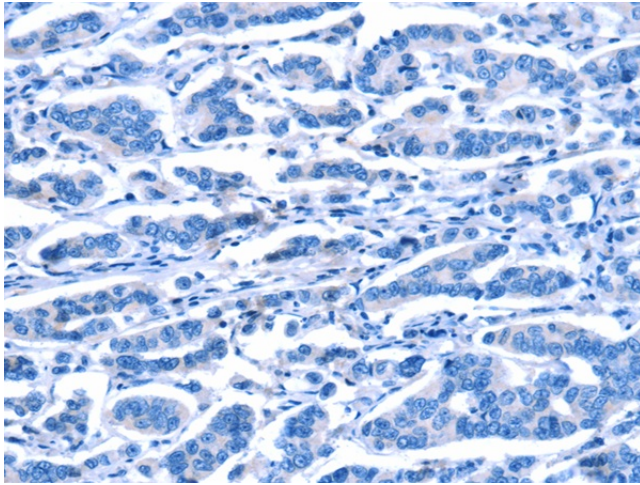
### Product images:



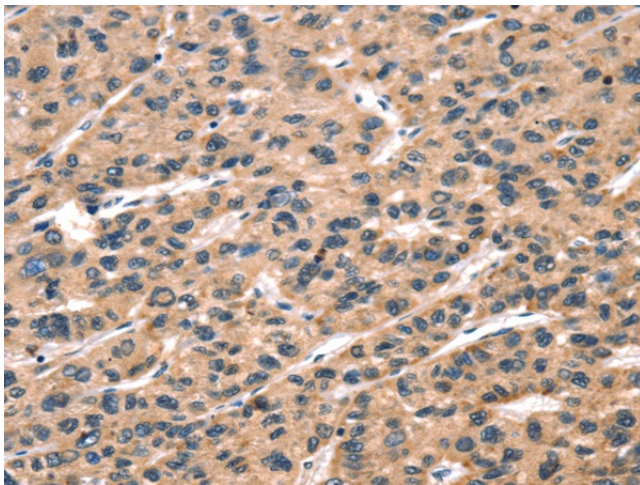
Gel: 12%SDS-PAGE  
Lysate: 40 µg  
Lane 1-2: HepG2 and 231 cell lysates  
Primary antibody: TA349798 (CGA Antibody) at dilution 1/650  
Secondary antibody: Goat anti rabbit IgG at 1/8000 dilution  
Exposure time: 1 minute



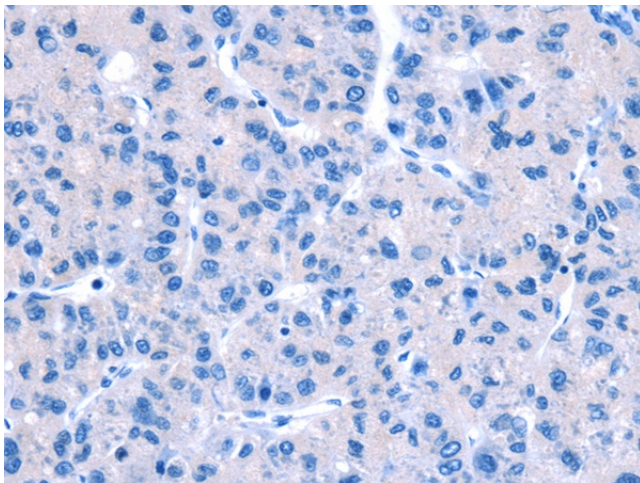
Immunohistochemistry of paraffin-embedded Human breast cancer tissue using TA349798 (CGA Antibody) at dilution 1/65 (Original magnification: ×200)



Immunohistochemistry of paraffin-embedded Human breast cancer tissue using TA349798 (CGA Antibody) at dilution 1/65, treated with fusion protein. (Original magnification: x200)



Immunohistochemistry of paraffin-embedded Human liver cancer tissue using TA349798 (CGA Antibody) at dilution 1/65 (Original magnification: x200)



Immunohistochemistry of paraffin-embedded Human liver cancer tissue using TA349798 (CGA Antibody) at dilution 1/65, treated with fusion protein. (Original magnification: x200)