

## Product datasheet for **TA349468**

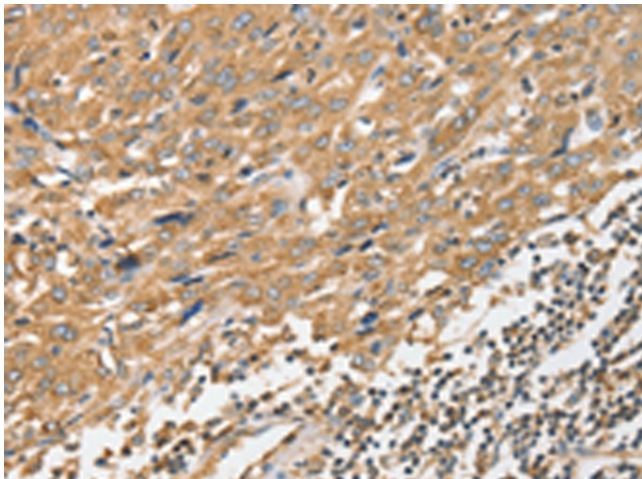
### Angiopoietin like 7 (ANGPTL7) Rabbit Polyclonal Antibody

#### Product data:

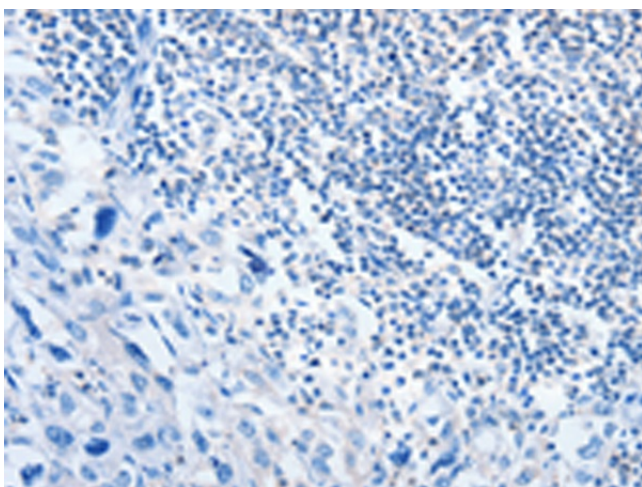
Product Type:	Primary Antibodies
Applications:	IHC
Recommended Dilution:	IHC: 50-200 Positive control: Human esophagus cancer Predicted cell location: Cytoplasm
Reactivity:	Human, Mouse
Host:	Rabbit
Isotype:	IgG
Clonality:	Polyclonal
Immunogen:	Fusion protein of human ANGPTL7
Formulation:	pH7.4 PBS, 0.05% NaN <sub>3</sub> , 40% GlycerolIn
Concentration:	lot specific
Purification:	Antigen affinity purification
Conjugation:	Unconjugated
Storage:	Store at -20°C as received.
Stability:	Stable for 12 months from date of receipt.
Gene Name:	angiopoietin like 7
Database Link:	<a href="#">NP_066969</a> <a href="#">Entrez Gene 654812 Mouse</a> <a href="#">Entrez Gene 10218 Human</a> <a href="#">O43827</a>
Background:	Angiopoietin-related protein 7 is a protein that in humans is encoded by the ANGPTL7 gene, a member of the ANGPTL family. Highly and specifically expressed in the cornea where is confined to the stromal layer.
Synonyms:	AngX; CDT6; dj647M16.1
Protein Families:	Druggable Genome, Secreted Protein, Transmembrane



[View online »](#)

**Product images:**

Immunohistochemistry of paraffin-embedded Human esophagus cancer tissue using TA349468 (ANGPTL7 Antibody) at dilution 1/40 (Original magnification:  $\times 200$ )



Immunohistochemistry of paraffin-embedded Human esophagus cancer tissue using TA349468 (ANGPTL7 Antibody) at dilution 1/40, treated with fusion protein. (Original magnification:  $\times 200$ )