

## Product datasheet for **TA349401**

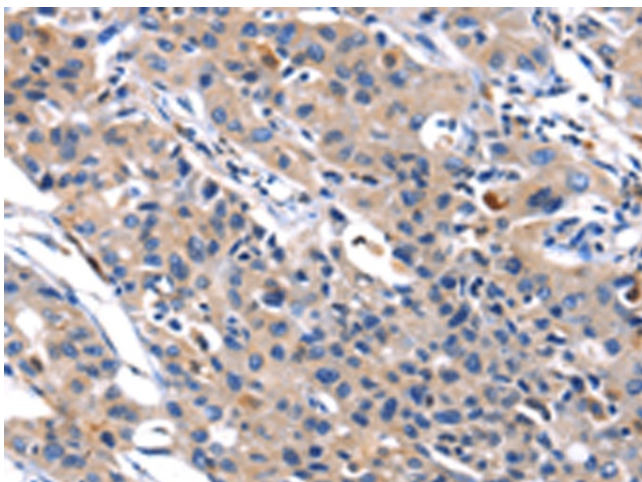
### MMP16 Rabbit Polyclonal Antibody

#### Product data:

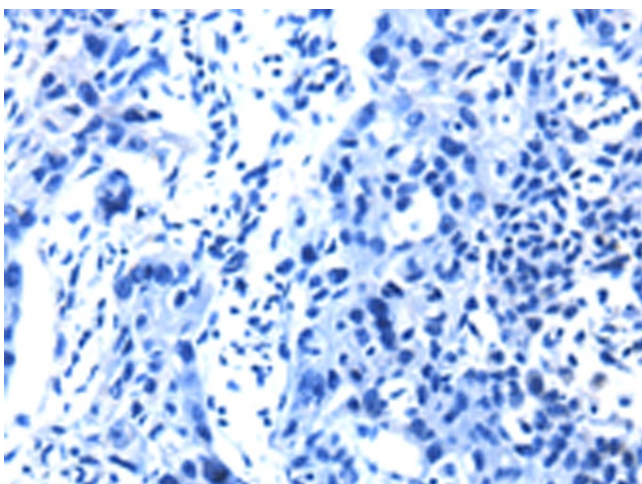
Product Type:	Primary Antibodies
Applications:	IHC
Recommended Dilution:	IHC: 50-200 Positive control: Human lung cancer Predicted cell location: Cytoplasm
Reactivity:	Human, Mouse, Rat
Host:	Rabbit
Isotype:	IgG
Clonality:	Polyclonal
Immunogen:	Fusion protein of human MMP16
Formulation:	pH7.4 PBS, 0.05% NaN <sub>3</sub> , 40% Glycerol
Concentration:	lot specific
Purification:	Antigen affinity purification
Conjugation:	Unconjugated
Storage:	Store at -20°C as received.
Stability:	Stable for 12 months from date of receipt.
Gene Name:	matrix metalloproteinase 16
Database Link:	<a href="#">NP_072086</a> <a href="#">Entrez Gene 17389 Mouse</a> <a href="#">Entrez Gene 65205 Rat</a> <a href="#">Entrez Gene 4325 Human</a> <a href="#">P51512</a>
Background:	Proteins of the matrix metalloproteinase (MMP) family are involved in the breakdown of extracellular matrix in normal physiological processes, such as embryonic development, reproduction, and tissue remodeling, as well as in disease processes, such as arthritis and metastasis. Most MMP's are secreted as inactive proproteins which are activated when cleaved by extracellular proteinases. The encoded protein activates MMP2 by cleavage. This gene was once referred to as MT-MMP2, but was renamed as MT-MMP3 or MMP16.
Synonyms:	C8orf57; DKFZp761D112; MMP-X2; MT-MMP2; MT-MMP3; MT3-MMP
Protein Families:	Druggable Genome, Protease, Secreted Protein, Transmembrane



[View online »](#)

**Product images:**

Immunohistochemistry of paraffin-embedded Human lung cancer tissue using TA349401 (MMP16 Antibody) at dilution 1/40 (Original magnification:  $\times 200$ )



Immunohistochemistry of paraffin-embedded Human lung cancer tissue using TA349401 (MMP16 Antibody) at dilution 1/40, treated with fusion protein. (Original magnification:  $\times 200$ )