

## Product datasheet for **TA349385**

### **MAD1 (MAD1L1) Rabbit Polyclonal Antibody**

#### **Product data:**

Product Type:	Primary Antibodies
Applications:	IHC, WB
Recommended Dilution:	WB: 500-2000 WB positive control: Hela, 231, hepG2 and Raji cells IHC: 25-100 Positive control: Human brain Predicted cell location: Nucleus
Reactivity:	Human, Mouse
Host:	Rabbit
Isotype:	IgG
Clonality:	Polyclonal
Immunogen:	Fusion protein of human MAD1L1
Formulation:	pH7.4 PBS, 0.05% NaN <sub>3</sub> , 40% Glycerol
Concentration:	lot specific
Purification:	Antigen affinity purification
Conjugation:	Unconjugated
Storage:	Store at -20°C as received.
Stability:	Stable for 12 months from date of receipt.
Predicted Protein Size:	83 kDa
Gene Name:	MAD1 mitotic arrest deficient like 1
Database Link:	<a href="#">NP_003541</a> <a href="#">Entrez Gene 17120 Mouse</a> <a href="#">Entrez Gene 8379 Human</a> <a href="#">Q9Y6D9</a>

**Background:** MAD1L1 is a component of the mitotic spindle-assembly checkpoint that prevents the onset of anaphase until all chromosome are properly aligned at the metaphase plate. MAD1L1 functions as a homodimer and interacts with MAD2L1. MAD1L1 may play a role in cell cycle control and tumor suppression. Three transcript variants encoding the same protein have been found for this gene.



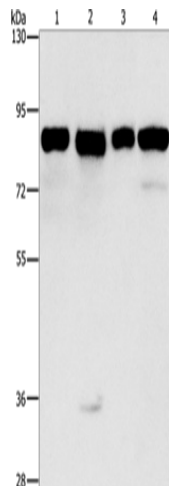
[View online »](#)

**Synonyms:** MAD1; PIG9; TP53I9; TXBP181

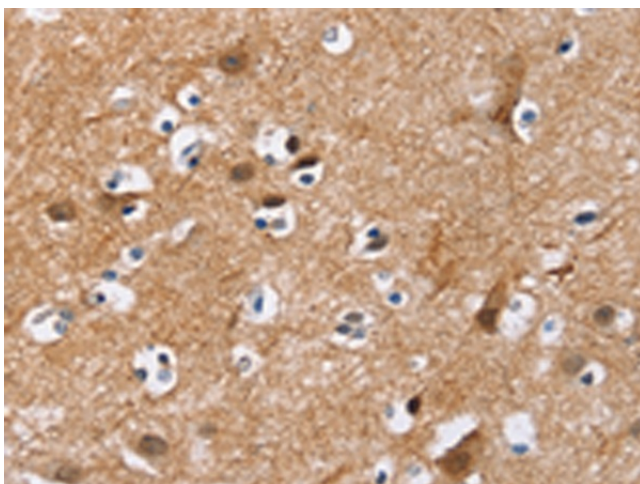
**Protein Families:** Druggable Genome

**Protein Pathways:** Cell cycle

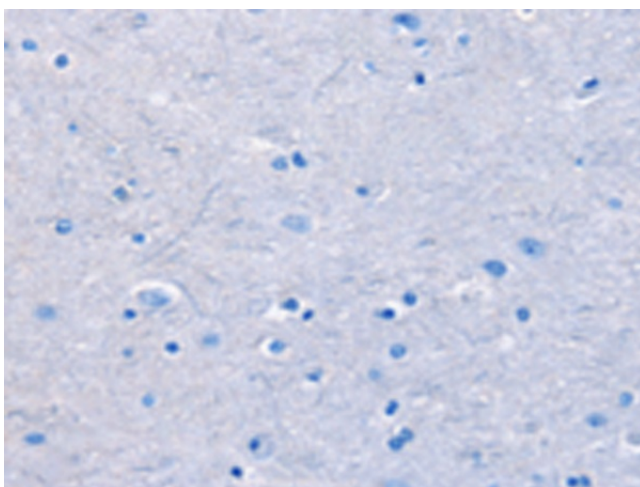
**Product images:**



Gel: 8%SDS-PAGE  
Lysate: 40 µg  
Lane 1-4: HeLa cells  
231 cells  
hepG2 cells  
Raji cells  
Primary antibody: TA349385 (MAD1L1 Antibody)  
at dilution 1/500  
Secondary antibody: Goat anti rabbit IgG at  
1/8000 dilution  
Exposure time: 1 second



Immunohistochemistry of paraffin-embedded  
Human brain tissue using TA349385 (MAD1L1  
Antibody) at dilution 1/25 (Original magnification:  
×200)



Immunohistochemistry of paraffin-embedded Human brain tissue using TA349385 (MAD1L1 Antibody) at dilution 1/25, treated with fusion protein. (Original magnification: ×200)