

Product datasheet for **TA349263**

Calpain 7 (CAPN7) Rabbit Polyclonal Antibody

Product data:

Product Type:	Primary Antibodies
Applications:	IHC, WB
Recommended Dilution:	ELISA: 2000-5000, WB: 500-2000, IHC: 25-100
Reactivity:	Human, Mouse
Host:	Rabbit
Isotype:	IgG
Clonality:	Polyclonal
Immunogen:	Fusion protein of human CAPN7
Formulation:	pH7.4 PBS, 0.05% NaN ₃ , 40% Glycerol
Concentration:	lot specific
Purification:	Antigen affinity purification
Conjugation:	Unconjugated
Storage:	Store at -20°C as received.
Stability:	Stable for 12 months from date of receipt.
Predicted Protein Size:	93 kDa
Gene Name:	calpain 7
Database Link:	NP_055111 Entrez Gene 23473 Human Q9Y6W3

Background: Calpains are ubiquitous, well-conserved family of calcium-dependent, cysteine proteases. The calpain proteins are heterodimers consisting of an invariant small subunit and variable large subunits. The large subunit possesses a cysteine protease domain, and both subunits possess calcium-binding domains. Calpains have been implicated in neurodegenerative processes, as their activation can be triggered by calcium influx and oxidative stress. The function of the protein encoded by this gene is not known. An orthologue has been found in mouse but it seems to diverge from other family members. The mouse orthologue is thought to be calcium independent with protease activity.

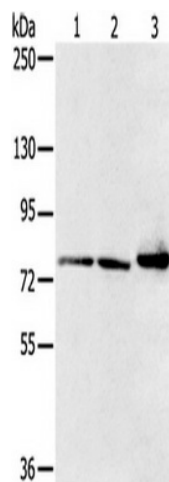
Synonyms: CALPAIN7; PALBH



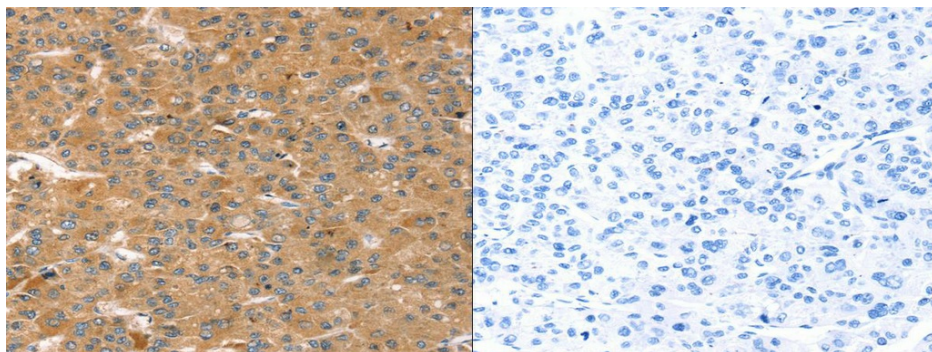
[View online »](#)

Protein Families: Druggable Genome, Protease

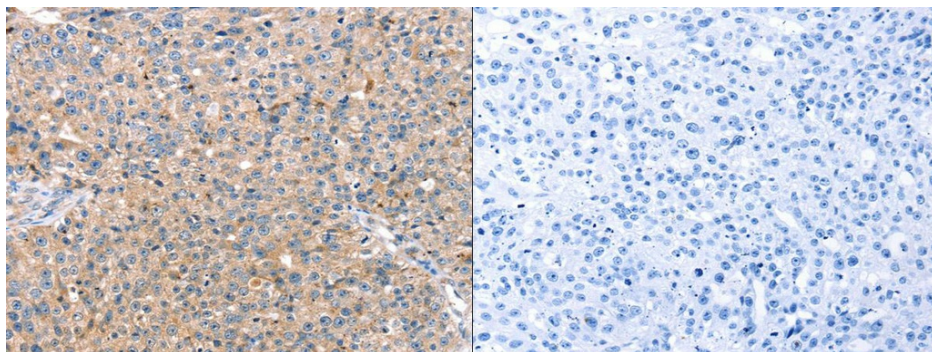
Product images:



Gel: 6%SDS-PAGE, Lysate: 40 ug, Lane 1-3: Mouse heart tissue, HT29 cells, mouse liver tissue, Primary antibody: (CAPN7 Antibody) at dilution 1/300, Secondary antibody: Goat anti rabbit IgG at 1/8000 dilution, Exposure time: 1 second



The image on the left is immunohistochemistry of paraffin-embedded Human liver cancer tissue using (CAPN7 Antibody) at dilution 1/20, on the right is treated with fusion protein. (Original magnification: $\times 200$)



The image on the left is immunohistochemistry of paraffin-embedded Human breast cancer tissue using (CAPN7 Antibody) at dilution 1/20, on the right is treated with fusion protein. (Original magnification: $\times 200$)