

## Product datasheet for **TA349231**

### IL18R1 Rabbit Polyclonal Antibody

#### Product data:

Product Type:	Primary Antibodies
Applications:	IHC
Recommended Dilution:	IHC: 50-200 Positive control: Human thyroid cancer Predicted cell location: Cytoplasm
Reactivity:	Human
Host:	Rabbit
Isotype:	IgG
Clonality:	Polyclonal
Immunogen:	Fusion protein of human IL18R1
Formulation:	pH7.4 PBS, 0.05% NaN <sub>3</sub> , 40% Glycerol
Concentration:	lot specific
Purification:	Antigen affinity purification
Conjugation:	Unconjugated
Storage:	Store at -20°C as received.
Stability:	Stable for 12 months from date of receipt.
Gene Name:	interleukin 18 receptor 1
Database Link:	<a href="#">NP_003846</a> <a href="#">Entrez Gene 8809 Human</a> <a href="#">Q13478</a>
Background:	The protein encoded by this gene is a cytokine receptor that belongs to the interleukin 1 receptor family. This receptor specifically binds interleukin 18 (IL18), and is essential for IL18 mediated signal transduction. IFN-alpha and IL12 are reported to induce the expression of this receptor in NK and T cells. This gene along with four other members of the interleukin 1 receptor family, including IL1R2, IL1R1, ILRL2 (IL-1Rrp2), and IL1RL1 (T1/ST2), form a gene cluster on chromosome 2q. Alternatively spliced transcript variants encoding different isoforms have been found for this gene.
Synonyms:	CD218a; CDw218a; IL-1Rrp; IL1RRP; IL18RA

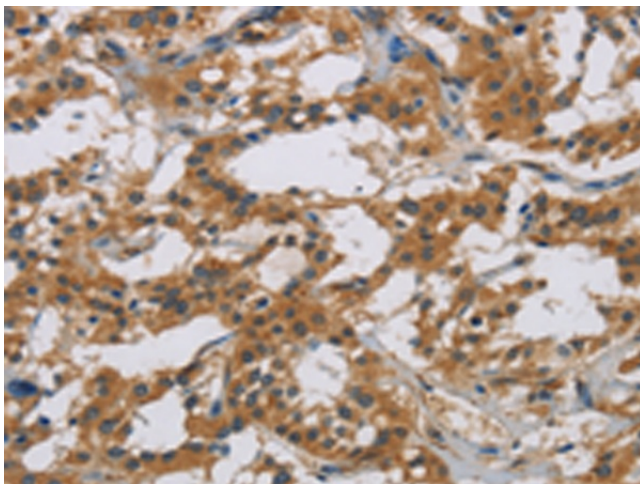


[View online »](#)

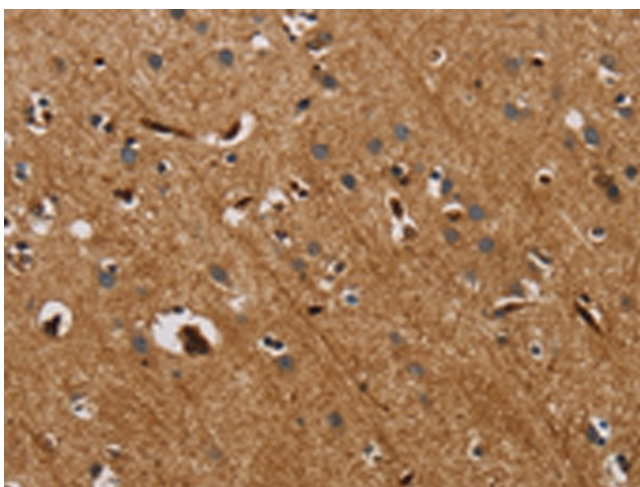
Protein Families: Druggable Genome, Transmembrane

Protein Pathways: Cytokine-cytokine receptor interaction

**Product images:**



Immunohistochemistry of paraffin-embedded Human thyroid cancer tissue using TA349231 (IL18R1 Antibody) at dilution 1/40. (Original magnification: x200)



Immunohistochemistry of paraffin-embedded Human brain tissue using TA349231 (IL18R1 Antibody) at dilution 1/40. (Original magnification: x200)