

Product datasheet for **TA349062**

PINK1 Rabbit Polyclonal Antibody

Product data:

Product Type:	Primary Antibodies
Applications:	WB
Recommended Dilution:	WB: 1 - 2 ug/mL
Reactivity:	Human, Mouse, Rat
Host:	Rabbit
Isotype:	IgG
Clonality:	Polyclonal
Immunogen:	PINK1 antibody was raised against a 16 amino acid peptide near the amino terminus of human PINK1.
Formulation:	PBS containing 0.02% sodium azide.
Concentration:	1 mg/ml
Purification:	PINK1 antibody is affinity chromatography purified via peptide column.
Conjugation:	Unconjugated
Storage:	Store at -20°C as received.
Stability:	Stable for 12 months from date of receipt.
Predicted Protein Size:	Predicted: 55 kDa; Observed: 53 kDa
Gene Name:	PTEN induced putative kinase 1
Database Link:	NP_115785 Entrez Gene 68943 Mouse Entrez Gene 298575 Rat Entrez Gene 65018 Human Q9BXM7
Background:	The PTEN-induced putative kinase 1 (PINK1) is a serine/threonine protein kinase that localizes to mitochondria and is thought to protect cells from stress-induced mitochondrial dysfunction (reviewed in 1). PINK1 recruits the E3 ubiquitin ligase Parkin to mitochondria to initiate mitophagy, an autophagic process that clears damaged mitochondria within a cell (2). PINK1 is cleaved by the mitochondrial protease PARL (3). Mutations in this gene cause one form of autosomal recessive early-onset Parkinson disease (4).
Synonyms:	BRPK; PARK6

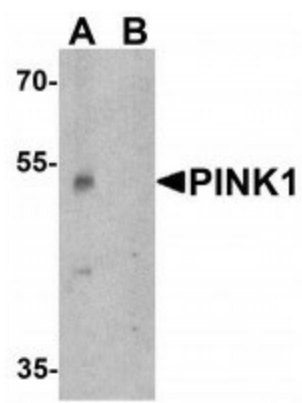


[View online »](#)

Protein Families: Druggable Genome, Protein Kinase

Protein Pathways: Parkinson's disease

Product images:



Western blot analysis of PINK1 in A431 cell lysate with PINK1 antibody at 1 ug/mL in (A) the absence and (B) the presence of blocking peptide.