

Product datasheet for **TA349013**

beta Actin (ACTB) Chicken Polyclonal Antibody

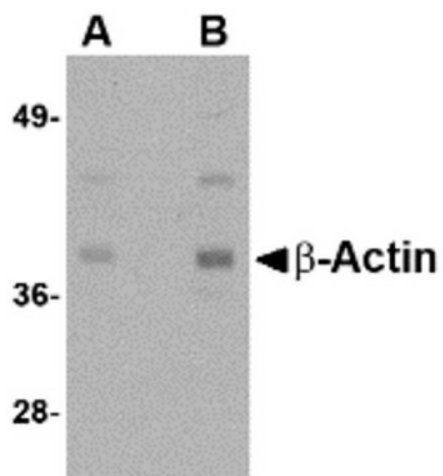
Product data:

Product Type:	Primary Antibodies
Applications:	IF, WB
Recommended Dilution:	WB: 1 - 2 ug/mL, ICC: 2 ug/mL
Reactivity:	Human, Mouse, Rat
Host:	Chicken
Isotype:	IgY
Clonality:	Polyclonal
Immunogen:	Beta-actin antibody was raised against a 16 amino acid synthetic peptide from near the amino terminus of human beta-actin.
Formulation:	PBS containing 0.02% sodium azide.
Concentration:	1 mg/ml
Purification:	Beta-actin Antibody is affinity chromatography purified via peptide column.
Conjugation:	Unconjugated
Storage:	Store at -20°C as received.
Stability:	Stable for 12 months from date of receipt.
Gene Name:	actin, beta
Database Link:	AAH02409 Entrez Gene 60 Human P60709
Background:	Beta-actin Antibody: Actins are highly conserved proteins that are involved in cell motility, structure and integrity, processes that are crucial for tissue development and the development of organism. The actin cytoskeleton is one of the principal drivers of cell motility and is capable of responding to complex signaling cascades. Recent evidence suggests that it may play key roles in regulating apoptosis and aging. Beta actin is one of six different actin isoforms which have been identified. Like GAPDH, beta-actin is constitutively expressed at high levels in almost all tissues and cell lines making it ideal for use as a loading control marker in immunoblots.
Synonyms:	BRWS1; PS1TP5BP1



[View online »](#)

Product images:



Western blot analysis of actin in HeLa cell lysate with β -actin antibody at (A) 1 and (B) 2 μ g/mL.



Immunocytochemistry of Actin in HeLa cells with Actin antibody at 2 μ g/mL.