

## Product datasheet for **TA348989**

### Creatine kinase M type (CKM) Goat Polyclonal Antibody

#### Product data:

Product Type:	Primary Antibodies
Applications:	WB
Recommended Dilution:	WB: 0.03-0.1 ug/ml
Reactivity:	Human, Mouse, Pig (Expected from sequence similarity: Rat, Dog, Cow)
Host:	Goat
Isotype:	IgG
Clonality:	Polyclonal
Immunogen:	The immunogen for Anti-creatine kinase M-type (aa258-270) Antibody: Peptide with sequence C-QKIEEIFKKAGHP, from the internal region of the protein sequence according to NP_001815.2.
Formulation:	Tris saline, 0.02% sodium azide, pH7.3 with 0.5% bovine serum albumin. Aliquot and store at -20°C. Minimize freezing and thawing.
Concentration:	lot specific
Purification:	Purified from goat serum by ammonium sulphate precipitation followed by antigen affinity chromatography using the immunizing peptide.
Conjugation:	Unconjugated
Storage:	Store at -20°C as received.
Stability:	Stable for 12 months from date of receipt.
Gene Name:	creatine kinase, M-type
Database Link:	<a href="#">NP_001815</a> <a href="#">Entrez Gene 12715 MouseEntrez Gene 24265 RatEntrez Gene 476435 DogEntrez Gene 1158 Human P06732</a>



[View online »](#)

**Background:**

The protein encoded by this gene is a cytoplasmic enzyme involved in energy homeostasis and is an important serum marker for myocardial infarction. The encoded protein reversibly catalyzes the transfer of phosphate between ATP and various phosphogens such as creatine phosphate. It acts as a homodimer in striated muscle as well as in other tissues, and as a heterodimer with a similar brain isozyme in heart. The encoded protein is a member of the ATP:guanido phosphotransferase protein family. [provided by RefSeq, Jul 2008]

**Synonyms:**

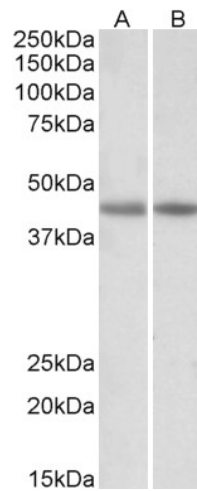
CKMM; M-CK

**Protein Families:**

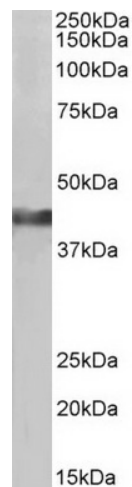
Druggable Genome

**Protein Pathways:**

Arginine and proline metabolism, Metabolic pathways

**Product images:**


TA348989 (0.03 ug/ml) staining of Human (A) and Mouse (B) Heart lysates (35 ug protein in RIPA buffer). Primary incubation was 1 hour. Detected by chemiluminescence.



TA348989 (0.3 ug/ml) staining of Pig Heart lysates (35 ug protein in RIPA buffer). Primary incubation was 1 hour. Detected by chemiluminescence.