

## Product datasheet for **TA348957**

### **HNF1 alpha (HNF1A) Goat Polyclonal Antibody**

#### **Product data:**

<b>Product Type:</b>	Primary Antibodies
<b>Applications:</b>	WB
<b>Recommended Dilution:</b>	WB: 0.1-0.3 ug/ml
<b>Reactivity:</b>	Human, Mouse, Pig (Expected from sequence similarity: Rat, Feline, Dog, Cow)
<b>Host:</b>	Goat
<b>Isotype:</b>	IgG
<b>Clonality:</b>	Polyclonal
<b>Immunogen:</b>	The immunogen for Anti-cardiac troponin T (aa201-213) Antibody: Peptide with sequence C-TERKSGKRQTERE, from the internal region of the protein sequence according to NP_000355.2; NP_001001430.1; NP_001001431.1; NP_001001432.1.
<b>Formulation:</b>	Tris saline, 0.02% sodium azide, pH7.3 with 0.5% bovine serum albumin. Aliquot and store at -20°C. Minimize freezing and thawing.
<b>Concentration:</b>	lot specific
<b>Purification:</b>	Purified from goat serum by ammonium sulphate precipitation followed by antigen affinity chromatography using the immunizing peptide.
<b>Conjugation:</b>	Unconjugated
<b>Storage:</b>	Store at -20°C as received.
<b>Stability:</b>	Stable for 12 months from date of receipt.
<b>Gene Name:</b>	HNF1 homeobox A
<b>Database Link:</b>	<a href="#">NP_000536</a> <a href="#">Entrez Gene 21405 MouseEntrez Gene 24817 RatEntrez Gene 486303 DogEntrez Gene 6927 Human P20823</a>



[View online »](#)

**Background:**

The protein encoded by this gene is the tropomyosin-binding subunit of the troponin complex, which is located on the thin filament of striated muscles and regulates muscle contraction in response to alterations in intracellular calcium ion concentration. Mutations in this gene have been associated with familial hypertrophic cardiomyopathy as well as with dilated cardiomyopathy. Transcripts for this gene undergo alternative splicing that results in many tissue-specific isoforms, however, the full-length nature of some of these variants has not yet been determined. [provided by RefSeq, Jul 2008]

**Synonyms:**

HNF-1A; HNF1; IDDM20; LFB1; MODY3; TCF-1; TCF1

**Note:**

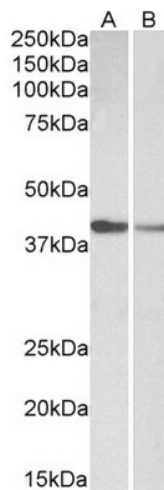
This antibody is expected to recognize all reported isoforms (NP\_000355.2; NP\_001001430.1; NP\_001001431.1; NP\_001001432.1).

**Protein Families:**

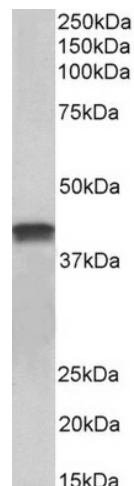
Adult stem cells, Druggable Genome, ES Cell Differentiation/IPS, Transcription Factors

**Protein Pathways:**

Maturity onset diabetes of the young

**Product images:**


TA348957 (0.1 ug/ml) staining of Human (A) and Mouse (B) Heart lysate (35 ug protein in RIPA buffer). Primary incubation was 1 hour. Detected by chemiluminescence.



TA348957 (0.1 ug/ml) staining of Pig Heart lysate (35 ug protein in RIPA buffer). Primary incubation was 1 hour. Detected by chemiluminescence.