

Product datasheet for **TA347737**

Epsin 2 (EPN2) Rabbit Polyclonal Antibody

Product data:

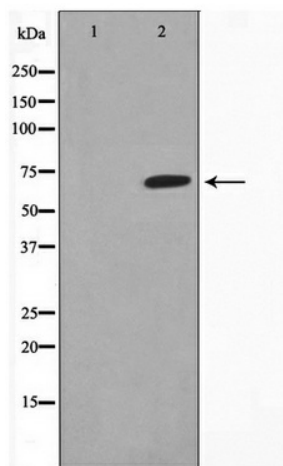
Product Type:	Primary Antibodies
Applications:	WB
Recommended Dilution:	WB: 1:500-1:2000
Reactivity:	Human, Mouse, Rat
Host:	Rabbit
Isotype:	IgG
Clonality:	Polyclonal
Immunogen:	The immunogen for anti-EPN2 Antibody: A synthesized peptide derived from human EPN2
Formulation:	Rabbit IgG in phosphate buffered saline , pH 7.4, 150mM NaCl, 0.02% sodium azide and 50% glycerol. Store at -20?. Stable for 12 months from date of receipt
Concentration:	lot specific
Purification:	Immunogen affinity purified
Conjugation:	Unconjugated
Storage:	Store at -20°C as received.
Stability:	Stable for 12 months from date of receipt.
Predicted Protein Size:	68 kDa
Gene Name:	epsin 2
Database Link:	NP_683723 Entrez Gene 13855 MouseEntrez Gene 60443 RatEntrez Gene 22905 Human O95208
Background:	This gene encodes a protein which interacts with clathrin and adaptor-related protein complex 2, alpha 1 subunit. The protein is found in a brain-derived clathrin-coated vesicle fraction and localizes to the peri-Golgi region and the cell periphery. The protein is thought to be involved in clathrin-mediated endocytosis. Alternate splicing of this gene results in two transcript variants encoding different isoforms.
Synonyms:	EHB21
Note:	EPN2 Antibody detects endogenous levels of EPN2



[View online »](#)

Protein Pathways: Endocytosis

Product images:



Western blot analysis on HepG2 cell lysate using EPN2 Antibody