

Product datasheet for **TA347632**

DKC1 Rabbit Polyclonal Antibody

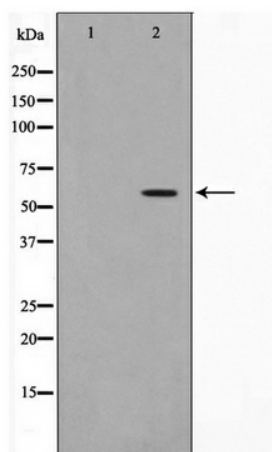
Product data:

Product Type:	Primary Antibodies
Applications:	WB
Recommended Dilution:	WB: 1:500-1:2000
Reactivity:	Human, Mouse, Rat
Host:	Rabbit
Isotype:	IgG
Clonality:	Polyclonal
Immunogen:	The immunogen for anti-Dyskerin Antibody: A synthesized peptide derived from human Dyskerin
Formulation:	Rabbit IgG in phosphate buffered saline , pH 7.4, 150mM NaCl, 0.02% sodium azide and 50% glycerol. Store at -20?. Stable for 12 months from date of receipt
Concentration:	lot specific
Purification:	Immunogen affinity purified
Conjugation:	Unconjugated
Storage:	Store at -20°C as received.
Stability:	Stable for 12 months from date of receipt.
Predicted Protein Size:	57 kDa
Gene Name:	dyskerin pseudouridine synthase 1
Database Link:	NP_001354 Entrez Gene 170944 Rat Entrez Gene 245474 Mouse Entrez Gene 1736 Human O60832
Background:	Seems to be involved in the function of telomerase. Associates with H/ACA small nucleolar RNAs and telomerase RNA
Synonyms:	CBF5; DKC; DKCX; NAP57; NOLA4; XAP101
Note:	Dyskerin Antibody detects endogenous levels of Dyskerin
Protein Families:	Druggable Genome



[View online »](#)

Product images:



Western blot analysis on HeLa cell lysate using
Dyskerin Antibody