

Product datasheet for **TA347384**

GAD67 (GAD1) Rabbit Polyclonal Antibody

Product data:

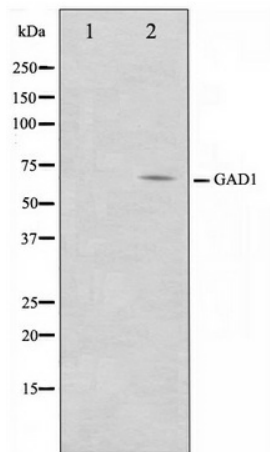
Product Type:	Primary Antibodies
Applications:	WB
Recommended Dilution:	WB: 1:500-1:3000
Reactivity:	Human, Mouse, Rat
Host:	Rabbit
Isotype:	IgG
Clonality:	Polyclonal
Immunogen:	The immunogen for anti-GAD1 Antibody: A synthesized peptide derived from human GAD1
Formulation:	Rabbit IgG in phosphate buffered saline , pH 7.4, 150mM NaCl, 0.02% sodium azide and 50% glycerol. Store at -20?. Stable for 12 months from date of receipt
Concentration:	lot specific
Purification:	Affinity-chromatography
Conjugation:	Unconjugated
Storage:	Store at -20°C as received.
Stability:	Stable for 12 months from date of receipt.
Predicted Protein Size:	67 kDa
Gene Name:	glutamate decarboxylase 1
Database Link:	NP_000808 Entrez Gene 14415 Mouse Entrez Gene 24379 Rat Entrez Gene 2571 Human Q99259
Background:	GAD67 Catalyzes the production of GABA. Belongs to the group II decarboxylase family. Homodimer. 3 isoforms of the human protein are produced by alternative splicing.
Synonyms:	CPSQ1; GAD; SCP
Note:	GAD1 antibody detects endogenous levels of total GAD1
Protein Families:	Druggable Genome



[View online »](#)

Protein Pathways:

Alanine, aspartate and glutamate metabolism, beta-Alanine metabolism, Butanoate metabolism, Metabolic pathways, Taurine and hypotaurine metabolism, Type I diabetes mellitus

Product images:

Western blot analysis on LOVO cell lysate using GAD1 Antibody