

## Product datasheet for **TA347266**

### PML Protein (PML) Rabbit Polyclonal Antibody

#### Product data:

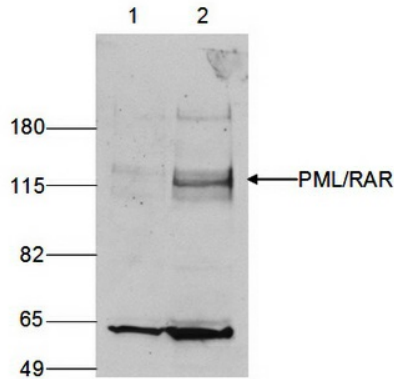
Product Type:	Primary Antibodies
Applications:	ELISA, WB
Recommended Dilution:	ELISA (1:100 ?? 1:200); Western blotting (1:750)
Reactivity:	Human
Host:	Rabbit
Isotype:	IgG
Clonality:	Polyclonal
Immunogen:	The immunogen for anti-PML antibody: human PML (Promyelocytic leukemia), using 3 different KLH-conjugated synthetic peptides.
Concentration:	lot specific
Purification:	Affinity purified polyclonal antibody in PBS containing 0.05% azide and 0.05% ProClin 300.
Conjugation:	Unconjugated
Storage:	Store at -20°C as received.
Stability:	Stable for 12 months from date of receipt.
Gene Name:	promyelocytic leukemia
Database Link:	<a href="#">NP_150242</a> <a href="#">Entrez Gene 5371 Human P29590</a>
Background:	PML (UniProtKB/Swiss-Prot entry P29590) is a transcription factor and tumor suppressor which belongs to the tripartite motif (TRIM) family. This motif contains three zinc-binding domains, a RING, a B-box type 1 and a B-box type 2, and a coiled-coil region. PML regulates the response of p53 to oncogenic signals. It is often involved in a chromosomal translocation between chromosomes 15 and 17 which results in a PML/RARalpha fusion protein and is associated with most cases of acute promyelocytic leukemia.
Synonyms:	MYL; PP8675; RNF71; TRIM19
Protein Families:	Druggable Genome, Transcription Factors
Protein Pathways:	Acute myeloid leukemia, Pathways in cancer, Ubiquitin mediated proteolysis



[View online »](#)

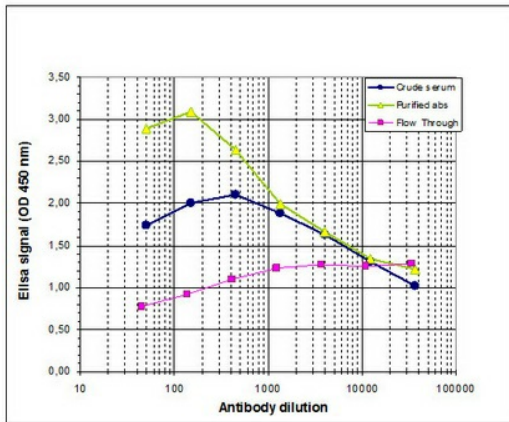
Product images:

Figure 2



WB using the antibody against PML. The antibody was diluted 1:750 in TBS-Tween containing 5% milk powder. The position of the PML/RAR fusion protein is indicated on the right; the marker (in kDa) is shown on the left. The smaller band of approximately 60 kDa might represent the endogenous PML protein.

Figure 1



Determination of the antibody titer. To determine the titer of the antibody, an ELISA was performed using a serial dilution of the antibody against human PML, crude serum and Flow Through in antigen coated wells. By plotting the absorbance against the antibody dilution (Figure 1), the titer of the antibody was estimated to be 1:6,000.