

## Product datasheet for **TA347077**

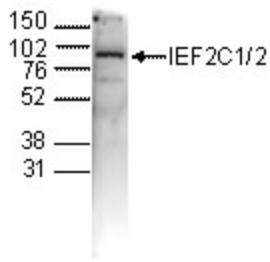
### AGO1 Rabbit Polyclonal Antibody

#### Product data:

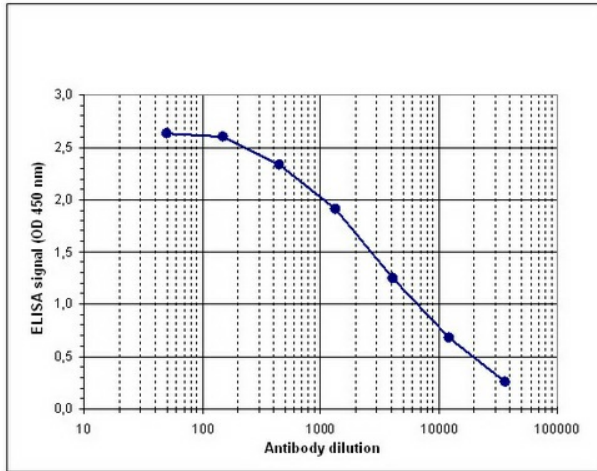
Product Type:	Primary Antibodies
Applications:	ELISA, WB
Recommended Dilution:	ELISA (1:100); Western blotting (1:1,000)
Reactivity:	Human
Host:	Rabbit
Isotype:	IgG
Clonality:	Polyclonal
Immunogen:	The immunogen for anti-EIF2C1/2 antibody: human IEF2C1/2 (eukaryotic translation initiation factor 2C1 and 2), using a KLH-conjugated synthetic peptide containing a sequence from the C-terminal part of both EIF2C1 and EIF2C2.
Concentration:	lot specific
Purification:	Whole antiserum from rabbit containing 0.05% azide.
Conjugation:	Unconjugated
Storage:	Store at -20°C as received.
Stability:	Stable for 12 months from date of receipt.
Gene Name:	argonaute 1, RISC catalytic component
Database Link:	<a href="#">NP_036331</a> <a href="#">Entrez Gene 26523 Human</a> <a href="#">Q9UL18</a>
Background:	IEF2C1 and 2 (UniProtKB/Swiss-Prot entries Q9UL18 and Q9UKV8) are members of the Argonaute family. These proteins are involved in short-interfering-RNA-mediated gene silencing. This process is mediated by the RISC (RNA induced silencing complex), a multicomponent nuclease that is able to degrade double stranded RNAs. The mRNA degradation is triggered by the association of specific siRNAs with their homologous mRNAs. IEF2C2 has been shown to be essential for embryonic development.
Synonyms:	EIF2C; EIF2C1; GERP95; Q99
Protein Families:	Druggable Genome



[View online »](#)

**Product images:**


WB using the antibody against IEF2C1/2 diluted 1:1,000 in TBS-Tween containing 5% skimmed milk. The position of the protein of interest is indicated on the right (expected size: 97 kDa); the marker (in kDa) is shown on the left.



Determination of the titer To determine the titer, an ELISA was performed using a serial dilution of the antibody against human IEF2C1/2. The plates were coated with the peptide used for immunization of the rabbit. By plotting the absorbance against the antibody dilution (Figure 1), the titer of the antibody was estimated to be 1:3, 500.