

Product datasheet for **TA347064**

beta V Tubulin (TUBB) Mouse Monoclonal Antibody [Clone ID: 1E1-E8-H4]

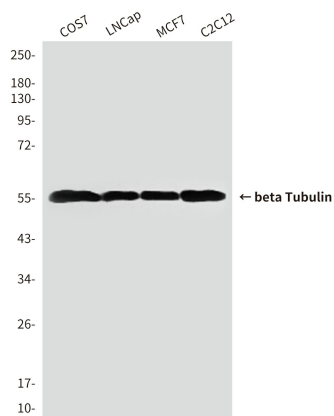
Product data:

| | |
|-------------------------|---|
| Product Type: | Primary Antibodies |
| Clone Name: | 1E1-E8-H4 |
| Applications: | IF, WB |
| Recommended Dilution: | WB: 1:5000, IF: 1:500 |
| Reactivity: | Human, Mouse, Hamster, Rat, Monkey, Goat, Chlamydomonas |
| Host: | Mouse |
| Isotype: | IgG1 |
| Clonality: | Monoclonal |
| Immunogen: | The immunogen for TUBB antibody: purified recombinant human Tubulin beta protein fragments expressed in E.coli. |
| Formulation: | Purified mouse monoclonal in PBS(pH 7.4) containing with 0.02% sodium azide, 0.1mg/ml BSA and 50% glycerol. |
| Purification: | Affinity purified |
| Conjugation: | Unconjugated |
| Storage: | Store at -20°C as received. |
| Stability: | Stable for 12 months from date of receipt. |
| Predicted Protein Size: | 55 kDa |
| Gene Name: | tubulin beta class I |
| Database Link: | NP_821133 Entrez Gene 574113 Monkey Entrez Gene 203068 Human P07437 |
| Background: | Tubulin is the major constituent of microtubules. It binds two moles of GTP, one at an exchangeable site on the beta chain and one at a non-exchangeable site on the alpha-chain. |
| Synonyms: | CDCBM6; CSCSC1; M40; OK; SW-cl.56; TUBB1; TUBB5 |
| Protein Families: | Druggable Genome |
| Protein Pathways: | Gap junction, Pathogenic Escherichia coli infection |

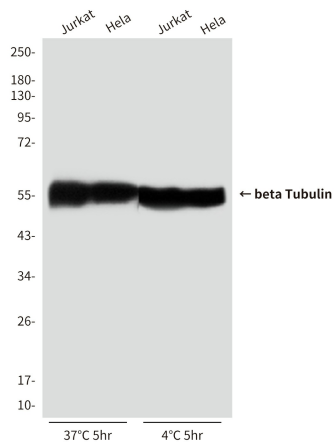


[View online »](#)

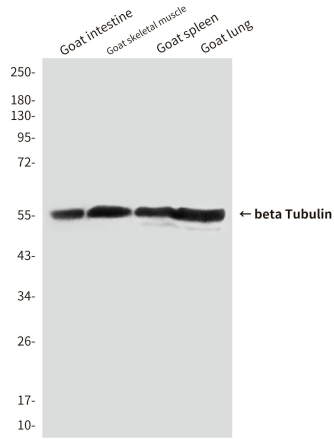
Product images:



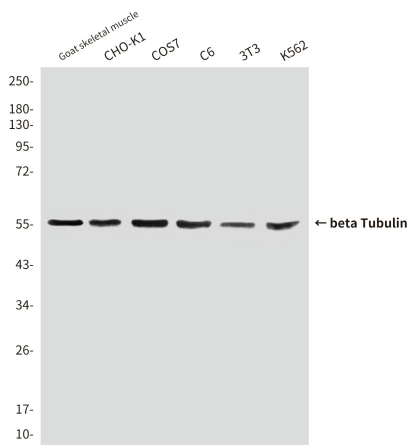
Western blot analysis of Tubulin beta in COS7, LNCap, MCF-7 and C2C12 lysates using Tubulin beta antibody.



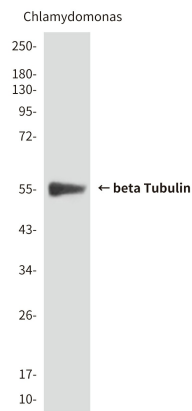
Western blot analysis of beta Tubulin (1E1) in Jurkat, HeLa, Jurkat, HeLa lysates using beta Tubulin (1E1) antibody.



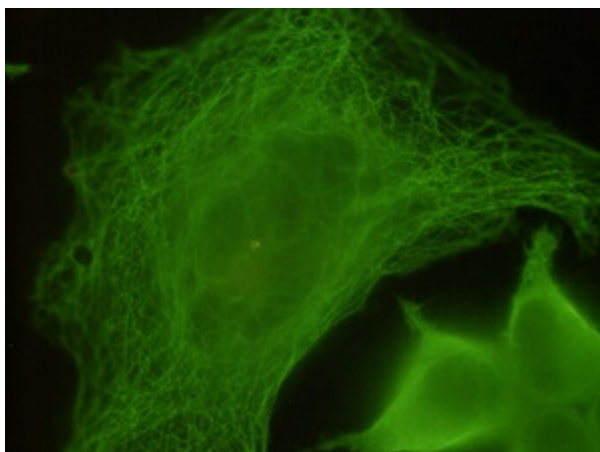
Western blot analysis of Tubulin beta in goat intestine, goat skeletal muscle, goat spleen and goat lung lysates using Tubulin beta antibody.



Western blot analysis of Tubulin beta in Goat skeletal muscle, CHO-K1, COS7, C6, 3T3 and K562 lysates using Tubulin beta antibody.



Western blot analysis of beta Tubulin in Chlamydomonas lysates using beta Tubulin antibody.



Immunocytochemistry analysis of Tubulin beta in HeLa cells using Tubulin beta antibody.