

Product datasheet for **TA346861**

INMT Rabbit Polyclonal Antibody

Product data:

Product Type:	Primary Antibodies
Applications:	WB
Recommended Dilution:	WB
Reactivity:	Human
Host:	Rabbit
Isotype:	IgG
Clonality:	Polyclonal
Immunogen:	The immunogen for anti-INMT antibody: synthetic peptide directed towards the N terminal of human INMT. Synthetic peptide located within the following region: KGGFTGGDEYQKHFLPRDYLATYYSFDGSPSPEAEMLKFNLECLHKTFGP
Formulation:	Liquid. Purified antibody supplied in 1x PBS buffer with 0.09% (w/v) sodium azide and 2% sucrose. <i>Note that this product is shipped as lyophilized powder to China customers.</i>
Purification:	Affinity Purified
Conjugation:	Unconjugated
Storage:	Store at -20°C as received.
Stability:	Stable for 12 months from date of receipt.
Predicted Protein Size:	29 kDa
Gene Name:	indolethylamine N-methyltransferase
Database Link:	NP_006765 Entrez Gene 11185 Human O95050
Background:	N-methylation of endogenous and xenobiotic compounds is a major method by which they are degraded. This gene encodes an enzyme that N-methylates indoles such as tryptamine. Alternative splicing results in multiple transcript variants. Read-through transcription also exists between this gene and the downstream FAM188B (family with sequence similarity 188, member B) gene. [provided by RefSeq, Nov 2010]
Synonyms:	TEMT

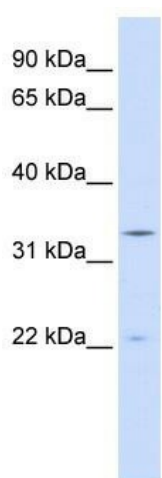


[View online »](#)

Note: Immunogen Sequence Homology: Human: 100%; Rabbit: 79%

Protein Pathways: Tryptophan metabolism

Product images:



WB Suggested Anti-INMT Antibody Titration: 0.2-1 ug/ml; ELISA Titer: 1:312500; Positive Control: 293T cell lysate