

Product datasheet for **TA346799**

METTL2B Rabbit Polyclonal Antibody

Product data:

| | |
|--------------------------------|---|
| Product Type: | Primary Antibodies |
| Applications: | WB |
| Recommended Dilution: | WB |
| Reactivity: | Human |
| Host: | Rabbit |
| Isotype: | IgG |
| Clonality: | Polyclonal |
| Immunogen: | The immunogen for anti-METTL2B antibody: synthetic peptide directed towards the N terminal of human METTL2B. Synthetic peptide located within the following region: INAHKYWPDFYKIHENGFFKDRHWLFTEFPELAPSQNQNHLKDWFLENKS |
| Formulation: | Liquid. Purified antibody supplied in 1x PBS buffer with 0.09% (w/v) sodium azide and 2% sucrose. <i>Note that this product is shipped as lyophilized powder to China customers.</i> |
| Purification: | Affinity Purified |
| Conjugation: | Unconjugated |
| Storage: | Store at -20°C as received. |
| Stability: | Stable for 12 months from date of receipt. |
| Predicted Protein Size: | 43 kDa |
| Gene Name: | methyltransferase like 2B |
| Database Link: | NP_060866 Entrez Gene 55798 Human Q6P1Q9 |
| Background: | This gene is a member of a family of methyltransferases that share homology with, but are distinct from, the UbiE family of methyltransferases. Alternatively spliced variants which encode different protein isoforms have been described; however, not all variants have been fully characterized. [provided by RefSeq, Jul 2008] |
| Synonyms: | METL; METTL2; METTL2A; PSENIP1 |



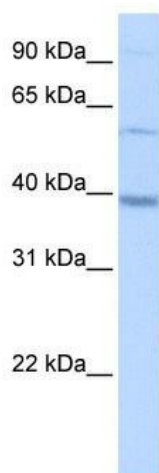
[View online »](#)

Note: Immunogen Sequence Homology: Dog: 100%; Human: 100%; Rabbit: 100%; Pig: 93%; Rat: 92%; Bovine: 92%; Guinea pig: 86%; Horse: 85%; Mouse: 75%

Protein Families: Druggable Genome

Protein Pathways: Androgen and estrogen metabolism, Histidine metabolism, Selenoamino acid metabolism, Tyrosine metabolism

Product images:



WB Suggested Anti-METTL2B Antibody Titration: 0.2-1 ug/ml; Positive Control: HepG2 cell lysate