

## Product datasheet for **TA346780**

### LIPT1 Rabbit Polyclonal Antibody

#### Product data:

Product Type:	Primary Antibodies
Applications:	WB
Recommended Dilution:	WB
Reactivity:	Human
Host:	Rabbit
Isotype:	IgG
Clonality:	Polyclonal
Immunogen:	The immunogen for anti-LIPT1 antibody: synthetic peptide directed towards the N terminal of human LIPT1. Synthetic peptide located within the following region: NCFQLLCNCQVPAAGFKKTVKNGLLIQSISNDVYQNLAVEDWIHDHMNLE
Formulation:	Liquid. Purified antibody supplied in 1x PBS buffer with 0.09% (w/v) sodium azide and 2% sucrose. <i>Note that this product is shipped as lyophilized powder to China customers.</i>
Purification:	Affinity Purified
Conjugation:	Unconjugated
Storage:	Store at -20°C as received.
Stability:	Stable for 12 months from date of receipt.
Predicted Protein Size:	42 kDa
Gene Name:	lipoyltransferase 1
Database Link:	<a href="#">NP_057013</a> <a href="#">Entrez Gene 51601 Human Q9Y234</a>



[View online »](#)

**Background:**

The process of transferring lipoic acid to proteins is a two-step process. The first step is the activation of lipoic acid by lipoate-activating enzyme to form lipoyl-AMP. For the second step, the protein encoded by this gene transfers the lipoyl moiety to apoproteins. Alternative splicing results in multiple transcript variants. A related pseudogene has been identified on chromosome 13. Read-through transcription also exists between this gene and the neighboring downstream mitochondrial ribosomal protein L30 (MRPL30) gene. [provided by RefSeq, Mar 2011]

**Synonyms:**

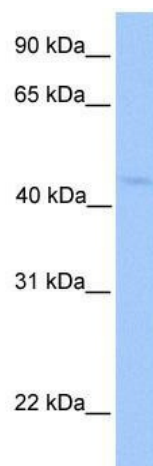
LIPT1D

**Note:**

Immunogen Sequence Homology: Dog: 100%; Rat: 100%; Horse: 100%; Human: 100%; Bovine: 93%; Rabbit: 93%; Mouse: 92%; Pig: 86%; Guinea pig: 86%

**Protein Pathways:**

Lipoic acid metabolism, Metabolic pathways

**Product images:**

WB Suggested Anti-LIPT1 Antibody Titration: 0.2-1 ug/ml; Positive Control: Hela cell lysate