

Product datasheet for **TA346776**

AASDHPPT Rabbit Polyclonal Antibody

Product data:

Product Type:	Primary Antibodies
Applications:	WB
Recommended Dilution:	WB
Reactivity:	Human
Host:	Rabbit
Isotype:	IgG
Clonality:	Polyclonal
Immunogen:	The immunogen for anti-AASDHPPT antibody: synthetic peptide directed towards the C terminal of human AASDHPPT. Synthetic peptide located within the following region: SRHQDVPSQDDSKPTQRQFTILNFNDLMSSAVPMTPEPDPDFWDCFCFTEE
Formulation:	Liquid. Purified antibody supplied in 1x PBS buffer with 0.09% (w/v) sodium azide and 2% sucrose. <i>Note that this product is shipped as lyophilized powder to China customers.</i>
Purification:	Affinity Purified
Conjugation:	Unconjugated
Storage:	Store at -20°C as received.
Stability:	Stable for 12 months from date of receipt.
Predicted Protein Size:	36 kDa
Gene Name:	aminoadipate-semialdehyde dehydrogenase-phosphopantetheinyl transferase
Database Link:	NP_056238 Entrez Gene 60496 Human Q9NRN7
Background:	The protein encoded by this gene is similar to <i>Saccharomyces cerevisiae</i> LYS5, which is required for the activation of the alpha-aminoadipate dehydrogenase in the biosynthetic pathway of lysine. Yeast alpha-aminoadipate dehydrogenase converts alpha-biosynthetic-aminoadipate semialdehyde to alpha-aminoadipate. It has been suggested that defects in the human gene result in pipercolic acidemia. [provided by RefSeq, Jul 2008]
Synonyms:	AASD-PPT; CGI-80; LYS2; LYS5

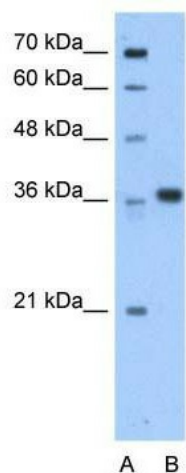


[View online »](#)

Note: Immunogen Sequence Homology: Horse: 100%; Human: 100%; Pig: 93%; Rat: 92%; Dog: 86%; Rabbit: 86%; Guinea pig: 85%; Bovine: 79%

Protein Pathways: Lysine biosynthesis, Lysine degradation, Metabolic pathways

Product images:



WB Suggested Anti-AASDHPPT Antibody Titration:
0.2-1 ug/ml; Positive Control: HepG2 cell lysate