

## Product datasheet for **TA346754**

### **POLR3F Rabbit Polyclonal Antibody**

#### **Product data:**

Product Type:	Primary Antibodies
Applications:	WB
Recommended Dilution:	WB
Reactivity:	Human
Host:	Rabbit
Isotype:	IgG
Clonality:	Polyclonal
Immunogen:	The immunogen for anti-POLR3F antibody: synthetic peptide directed towards the middle region of human POLR3F. Synthetic peptide located within the following region: LNQQCFKFLQSKAETARESKQNPMIQRNSSFASSHEVWKYICELGISKVE
Formulation:	Liquid. Purified antibody supplied in 1x PBS buffer with 0.09% (w/v) sodium azide and 2% sucrose. <i>Note that this product is shipped as lyophilized powder to China customers.</i>
Purification:	Affinity Purified
Conjugation:	Unconjugated
Storage:	Store at -20°C as received.
Stability:	Stable for 12 months from date of receipt.
Predicted Protein Size:	36 kDa
Gene Name:	polymerase (RNA) III subunit F
Database Link:	<a href="#">NP_006457</a> <a href="#">Entrez Gene 10621 Human</a> <a href="#">Q9H1D9</a>
Background:	The protein encoded by this gene is one of more than a dozen subunits forming eukaryotic RNA polymerase III (RNA Pol III), which transcribes 5S ribosomal RNA and tRNA genes. This protein has been shown to bind both TFIIIB90 and TBP, two subunits of RNA polymerase III transcription initiation factor IIIB (TFIIIB). Unlike most of the other RNA Pol III subunits, the encoded protein is unique to this polymerase. Alternative splicing results in multiple transcript variants. [provided by RefSeq, Sep 2013]



[View online »](#)

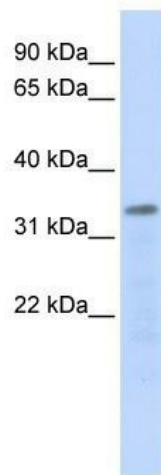
**Synonyms:** RPC6; RPC39

**Note:** Immunogen Sequence Homology: Pig: 100%; Rat: 100%; Horse: 100%; Human: 100%; Mouse: 100%; Rabbit: 100%; Guinea pig: 100%; Dog: 93%; Bovine: 93%; Zebrafish: 92%

**Protein Families:** Transcription Factors

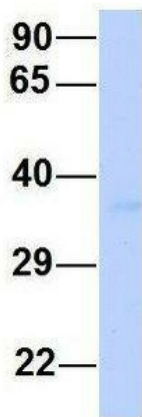
**Protein Pathways:** Cytosolic DNA-sensing pathway, Metabolic pathways, Purine metabolism, Pyrimidine metabolism, RNA polymerase

**Product images:**



WB Suggested Anti-POLR3F Antibody Titration: 0.2-1 ug/ml; ELISA Titer: 1: 62500; Positive Control: 721\_B cell lysate. POLR3F is supported by BioGPS gene expression data to be expressed in 721\_B

**POLR3F**



Rabbit Anti-POLR3F  
Sample Type: Human 293T  
Antibody Concentration: 1ug/mL

Host: Rabbit; Target Name: POLR3F; Sample Tissue: Human 293T; Antibody Dilution: 1.0 ug/ml. POLR3F is supported by BioGPS gene expression data to be expressed in HEK293T