

Product datasheet for **TA346749**

POLR2H Rabbit Polyclonal Antibody

Product data:

Product Type:	Primary Antibodies
Applications:	WB
Recommended Dilution:	WB
Reactivity:	Human
Host:	Rabbit
Isotype:	IgG
Clonality:	Polyclonal
Immunogen:	The immunogen for anti-POLR2H antibody: synthetic peptide directed towards the N terminal of human POLR2H. Synthetic peptide located within the following region: DLGDKFRLVIASSTLYEDGTLDDGEYNPTDDRPSRADQFEYVMYGKVYRIE
Formulation:	Liquid. Purified antibody supplied in 1x PBS buffer with 0.09% (w/v) sodium azide and 2% sucrose. <i>Note that this product is shipped as lyophilized powder to China customers.</i>
Purification:	Protein A purified
Conjugation:	Unconjugated
Storage:	Store at -20°C as received.
Stability:	Stable for 12 months from date of receipt.
Predicted Protein Size:	17 kDa
Gene Name:	polymerase (RNA) II subunit H
Database Link:	NP_006223 Entrez Gene 5437 Human P52434
Background:	The three eukaryotic RNA polymerases are complex multisubunit enzymes that play a central role in the transcription of nuclear genes. This gene encodes an essential and highly conserved subunit of RNA polymerase II that is shared by the other two eukaryotic DNA-directed RNA polymerases, I and III. Alternative splicing results in multiple transcript variants of this gene. [provided by RefSeq, Jul 2013]
Synonyms:	RPABC3; RPB8; RPB17



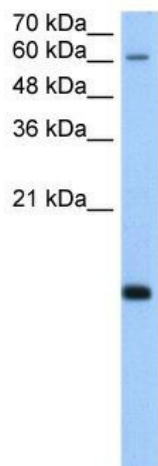
[View online »](#)

Note: Immunogen Sequence Homology: Pig: 100%; Rat: 100%; Horse: 100%; Human: 100%; Mouse: 100%; Bovine: 100%; Rabbit: 100%; Guinea pig: 100%; Zebrafish: 93%

Protein Families: Transcription Factors

Protein Pathways: Huntington's disease, Metabolic pathways, Purine metabolism, Pyrimidine metabolism, RNA polymerase

Product images:



WB Suggested Anti-POLR2H Antibody Titration: 5.0 ug/ml; Positive Control: HepG2 cell lysate. POLR2H is supported by BioGPS gene expression data to be expressed in HepG2