

## Product datasheet for **TA346746**

### MEKK1 (MAP3K1) Rabbit Polyclonal Antibody

#### Product data:

Product Type:	Primary Antibodies
Applications:	WB
Recommended Dilution:	WB
Reactivity:	Human
Host:	Rabbit
Isotype:	IgG
Clonality:	Polyclonal
Immunogen:	The immunogen for anti-MAP3K1 antibody: synthetic peptide directed towards the C terminal of human MAP3K1. Synthetic peptide located within the following region: LGAFSSCYQAQDVGTLMAVKQVTYVRNTSSEQEEVVEALREEIRMMSH
Formulation:	Liquid. Purified antibody supplied in 1x PBS buffer with 0.09% (w/v) sodium azide and 2% sucrose. <i>Note that this product is shipped as lyophilized powder to China customers.</i>
Purification:	Affinity Purified
Conjugation:	Unconjugated
Storage:	Store at -20°C as received.
Stability:	Stable for 12 months from date of receipt.
Predicted Protein Size:	164 kDa
Gene Name:	mitogen-activated protein kinase kinase kinase 1
Database Link:	<a href="#">NP_005912</a> <a href="#">Entrez Gene 4214 Human</a> <a href="#">Q13233</a>
Background:	The protein encoded by this gene is a serine/threonine kinase and is part of some signal transduction cascades, including the ERK and JNK kinase pathways as well as the NF-kappa-B pathway. The encoded protein is activated by autophosphorylation and requires magnesium as a cofactor in phosphorylating other proteins. This protein has E3 ligase activity conferred by a plant homeodomain (PHD) in its N-terminus and phospho-kinase activity conferred by a kinase domain in its C-terminus. [provided by RefSeq, Mar 2012]



[View online »](#)

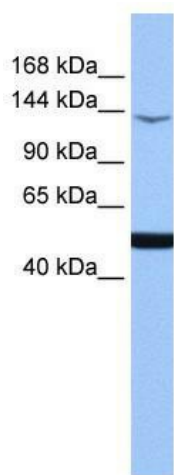
**Synonyms:** MAPKKK1; MEKK; MEKK 1; MEKK1; SRXY6

**Note:** Immunogen Sequence Homology: Dog: 100%; Pig: 100%; Rat: 100%; Horse: 100%; Human: 100%; Mouse: 100%; Bovine: 100%; Rabbit: 100%; Zebrafish: 100%; Guinea pig: 100%

**Protein Families:** Druggable Genome, Protein Kinase

**Protein Pathways:** GnRH signaling pathway, MAPK signaling pathway, Neurotrophin signaling pathway, RIG-I-like receptor signaling pathway, Ubiquitin mediated proteolysis

### Product images:



WB Suggested Anti-MAP3K1 Antibody Titration:  
0.2-1 ug/ml; Positive Control: 721\_B cell lysate