

Product datasheet for **TA346733**

Serine Palmitoyltransferase (SPTLC2) Rabbit Polyclonal Antibody

Product data:

Product Type:	Primary Antibodies
Applications:	WB
Recommended Dilution:	WB
Reactivity:	Human
Host:	Rabbit
Isotype:	IgG
Clonality:	Polyclonal
Immunogen:	The immunogen for anti-SPTLC2 antibody: synthetic peptide directed towards the N terminal of human SPTLC2. Synthetic peptide located within the following region: VLTYVGYGVLTFLGYLRDFLRWRIEKCHHATEREEQKDFVSLYQDFENF
Formulation:	Liquid. Purified antibody supplied in 1x PBS buffer with 0.09% (w/v) sodium azide and 2% sucrose. <i>Note that this product is shipped as lyophilized powder to China customers.</i>
Purification:	Affinity Purified
Conjugation:	Unconjugated
Storage:	Store at -20°C as received.
Stability:	Stable for 12 months from date of receipt.
Predicted Protein Size:	63 kDa
Gene Name:	serine palmitoyltransferase long chain base subunit 2
Database Link:	NP_004854 Entrez Gene 9517 Human O15270
Background:	This gene encodes a long chain base subunit of serine palmitoyltransferase. Serine palmitoyltransferase, which consists of two different subunits, is the key enzyme in sphingolipid biosynthesis. It catalyzes the pyridoxal-5-prime-phosphate-dependent condensation of L-serine and palmitoyl-CoA to 3-oxosphinganine. Mutations in this gene were identified in patients with hereditary sensory neuropathy type I. [provided by RefSeq, Mar 2011]



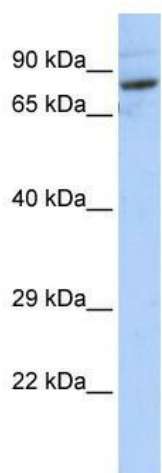
[View online »](#)

Synonyms: hLCB2a; HSN1C; LCB2; LCB2A; NSAN1C; SPT2

Note: Immunogen Sequence Homology: Pig: 100%; Rat: 100%; Human: 100%; Mouse: 100%; Bovine: 100%; Rabbit: 100%; Zebrafish: 100%; Guinea pig: 100%; Horse: 93%; Dog: 91%

Protein Pathways: Metabolic pathways, Sphingolipid metabolism

Product images:



WB Suggested Anti-SPTLC2 Antibody Titration:
0.2-1 ug/ml; ELISA Titer: 1: 312500; Positive
Control: HepG2 cell lysate