

Product datasheet for TA346729

PNPLA4 Rabbit Polyclonal Antibody

Product data:

Product Type:	Primary Antibodies
Applications:	WB
Recommended Dilution:	WB
Reactivity:	Human
Host:	Rabbit
Isotype:	IgG
Clonality:	Polyclonal
Immunogen:	The immunogen for anti-PNPLA4 antibody: synthetic peptide directed towards the C terminal of human PNPLA4. Synthetic peptide located within the following region: SPFSGRLDISPQDKGQLDLYVNIQAKQDIMLSLANLVRLNQALFPPSKRKM
Formulation:	Liquid. Purified antibody supplied in 1x PBS buffer with 0.09% (w/v) sodium azide and 2% sucrose. <i>Note that this product is shipped as lyophilized powder to China customers.</i>
Purification:	Affinity Purified
Conjugation:	Unconjugated
Storage:	Store at -20°C as received.
Stability:	Stable for 12 months from date of receipt.
Predicted Protein Size:	28 kDa
Gene Name:	patatin like phospholipase domain containing 4
Database Link:	NP_004641 Entrez Gene 8228 Human P41247
Background:	This gene encodes a member of the patatin-like family of phospholipases. The encoded enzyme has both triacylglycerol lipase and transacylase activities and may be involved in adipocyte triglyceride homeostasis. Alternate splicing results in multiple transcript variants. A pseudogene of this gene is found on chromosome Y. [provided by RefSeq, Feb 2010]
Synonyms:	DXS1283E; GS2; iPLA2eta

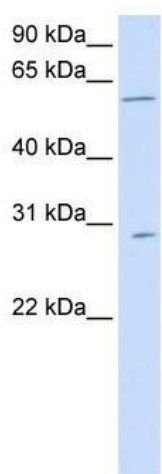


[View online »](#)

Note: Immunogen Sequence Homology: Dog: 100%; Pig: 100%; Horse: 100%; Human: 100%; Bovine: 100%; Rat: 86%; Guinea pig: 86%

Protein Pathways: Retinol metabolism

Product images:



WB Suggested Anti-PNPLA4 Antibody Titration:
0.2-1 ug/ml; ELISA Titer: 1: 1562500; Positive
Control: Human Liver