

## Product datasheet for **TA346690**

### Sbk1 Rabbit Polyclonal Antibody

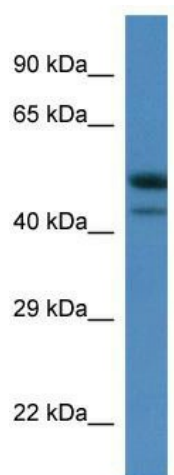
#### Product data:

Product Type:	Primary Antibodies
Applications:	WB
Recommended Dilution:	WB
Reactivity:	Mouse
Host:	Rabbit
Isotype:	IgG
Clonality:	Polyclonal
Immunogen:	The immunogen for anti-Sbk1 antibody: synthetic peptide corresponding to a region of Mouse. Synthetic peptide located within the following region: GSRPSPSVGPVVPVVPVPEAGLAPPAPPGRDGRDTSKSGQVWL
Formulation:	Liquid. Purified antibody supplied in 1x PBS buffer with 0.09% (w/v) sodium azide and 2% sucrose. <i>Note that this product is shipped as lyophilized powder to China customers.</i>
Purification:	Affinity Purified
Conjugation:	Unconjugated
Storage:	Store at -20°C as received.
Stability:	Stable for 12 months from date of receipt.
Predicted Protein Size:	46 kDa
Gene Name:	SH3-binding kinase 1
Database Link:	<a href="#">NP_663562</a> <a href="#">Entrez Gene 104175 Mouse</a> <a href="#">Q8QZX0</a>
Background:	May be involved in signal-transduction pathways related to the control of brain development.
Synonyms:	Sbk
Note:	Immunogen Sequence Homology: Rat: 100%; Human: 100%; Pig: 93%; Mouse: 93%; Guinea pig: 93%



[View online »](#)

## Product images:



WB Suggested Anti-Sbk1 Antibody; Titration: 1.0 ug/ml; Positive Control: Mouse Thymus