

## Product datasheet for **TA346673**

### OXCT1 Rabbit Polyclonal Antibody

#### Product data:

Product Type:	Primary Antibodies
Applications:	WB
Recommended Dilution:	WB
Reactivity:	Rat, Human
Host:	Rabbit
Isotype:	IgG
Clonality:	Polyclonal
Immunogen:	The immunogen for anti-OXCT1 antibody: synthetic peptide directed towards the middle region of human OXCT1. Synthetic peptide located within the following region: GMYANLGIGIPLLASNFISPNTVHLQSENGVLGLGPYPRQHEADADLIN
Formulation:	Liquid. Purified antibody supplied in 1x PBS buffer with 0.09% (w/v) sodium azide and 2% sucrose. <i>Note that this product is shipped as lyophilized powder to China customers.</i>
Purification:	Affinity Purified
Conjugation:	Unconjugated
Storage:	Store at -20°C as received.
Stability:	Stable for 12 months from date of receipt.
Predicted Protein Size:	52 kDa
Gene Name:	3-oxoacid CoA-transferase 1
Database Link:	<a href="#">NP_000427</a> <a href="#">Entrez Gene 690163 Rat</a> <a href="#">Entrez Gene 5019 Human</a> <a href="#">P55809</a>
Background:	This gene encodes a member of the 3-oxoacid CoA-transferase gene family. The encoded protein is a homodimeric mitochondrial matrix enzyme that plays a central role in extrahepatic ketone body catabolism by catalyzing the reversible transfer of coenzyme A from succinyl-CoA to acetoacetate. Mutations in this gene are associated with succinyl CoA:3-oxoacid CoA transferase deficiency. [provided by RefSeq, Jul 2008]
Synonyms:	OXCT; SCOT

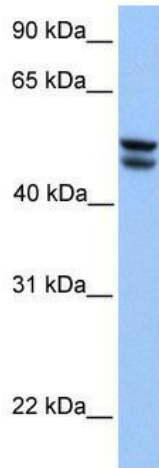


[View online »](#)

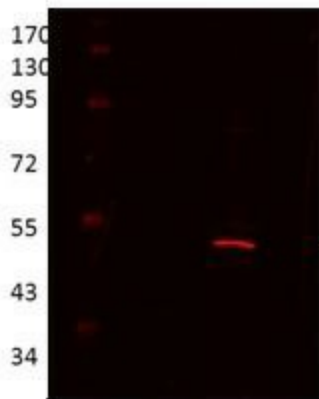
**Note:** Immunogen Sequence Homology: Pig: 100%; Rat: 100%; Human: 100%; Mouse: 100%; Yeast: 100%; Bovine: 100%; Rabbit: 100%; Guinea pig: 100%; Dog: 92%; Horse: 92%; Zebrafish: 92%

**Protein Pathways:** Butanoate metabolism, Synthesis and degradation of ketone bodies, Valine, leucine and isoleucine degradation

**Product images:**



WB Suggested Anti-OXCT1 Antibody Titration: 0.2-1 ug/ml; Positive Control: HepG2 cell lysate



← 3-oxoacid CoA transferase 1, 52kDa

OXCT1 antibody - middle region validated by WB using Proximal kidney tubules purified from cortex at 1: 1000.