

Product datasheet for **TA346635**

Pyrophosphatase 1 (PPA1) Rabbit Polyclonal Antibody

Product data:

Product Type:	Primary Antibodies
Applications:	WB
Recommended Dilution:	WB
Reactivity:	Human
Host:	Rabbit
Isotype:	IgG
Clonality:	Polyclonal
Immunogen:	The immunogen for anti-PPA1 antibody: synthetic peptide directed towards the N terminal of human PPA1. Synthetic peptide located within the following region: PRWSNAKMEIATKDPLNPIKQDVKKGLRYVANLFPYKGYIWNYGAIPQT
Formulation:	Liquid. Purified antibody supplied in 1x PBS buffer with 0.09% (w/v) sodium azide and 2% sucrose. <i>Note that this product is shipped as lyophilized powder to China customers.</i>
Purification:	Protein A purified
Conjugation:	Unconjugated
Storage:	Store at -20°C as received.
Stability:	Stable for 12 months from date of receipt.
Predicted Protein Size:	33 kDa
Gene Name:	pyrophosphatase (inorganic) 1
Database Link:	NP_066952 Entrez Gene 5464 Human Q15181
Background:	The protein encoded by this gene is a member of the inorganic pyrophosphatase (PPase) family. PPases catalyze the hydrolysis of pyrophosphate to inorganic phosphate, which is important for the phosphate metabolism of cells. Studies of a similar protein in bovine suggested a cytoplasmic localization of this enzyme. [provided by RefSeq, Jul 2008]
Synonyms:	HEL-S-66p; IOPPP; PP; PP1; SID6-8061



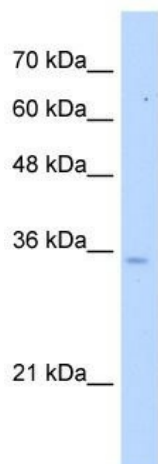
[View online »](#)

Note: Immunogen Sequence Homology: Dog: 100%; Pig: 100%; Rat: 100%; Goat: 100%; Horse: 100%; Human: 100%; Mouse: 100%; Bovine: 100%; Rabbit: 100%; Zebrafish: 100%; Guinea pig: 100%; Yeast: 80%

Protein Families: ES Cell Differentiation/IPS

Protein Pathways: Oxidative phosphorylation

Product images:



WB Suggested Anti-PPA1 Antibody; Titration: 5.0 ug/ml; Positive Control: HepG2 Whole Cell