

Product datasheet for **TA346621**

RDH11 Rabbit Polyclonal Antibody

Product data:

Product Type:	Primary Antibodies
Applications:	WB
Recommended Dilution:	WB
Reactivity:	Human
Host:	Rabbit
Isotype:	IgG
Clonality:	Polyclonal
Immunogen:	The immunogen for anti-RDH11 antibody: synthetic peptide directed towards the C terminal of human RDH11. Synthetic peptide located within the following region: SFFIKTPQGAQTSLHCALTEGLEILSGNHFS DCHVAWWSAQARNETIAR
Formulation:	Liquid. Purified antibody supplied in 1x PBS buffer with 0.09% (w/v) sodium azide and 2% sucrose. <i>Note that this product is shipped as lyophilized powder to China customers.</i>
Purification:	Affinity Purified
Conjugation:	Unconjugated
Storage:	Store at -20°C as received.
Stability:	Stable for 12 months from date of receipt.
Predicted Protein Size:	35 kDa
Gene Name:	retinol dehydrogenase 11 (all-trans/9-cis/11-cis)
Database Link:	NP_057110 Entrez Gene 51109 Human Q8TC12
Background:	The protein encoded by this gene is an NADPH-dependent retinal reductase and a short-chain dehydrogenase/reductase. The encoded protein has no steroid dehydrogenase activity. [provided by RefSeq, Nov 2011]
Synonyms:	ARSDR1; CGI82; HCBP12; MDT1; PSDR1; RALR1; RDJCSS; SCALD; SDR7C1
Note:	Immunogen Sequence Homology: Dog: 100%; Pig: 100%; Rat: 100%; Horse: 100%; Human: 100%; Bovine: 100%; Rabbit: 100%; Mouse: 92%; Guinea pig: 86%

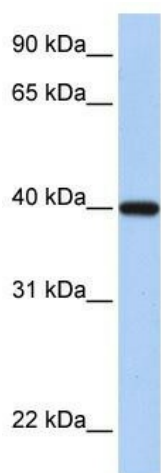


[View online »](#)

Protein Families: Druggable Genome

Protein Pathways: Metabolic pathways, Retinol metabolism

Product images:



WB Suggested Anti-RDH11 Antibody Titration:
0.2-1 ug/ml; Positive Control: Human heart