

Product datasheet for **TA346521**

FBP2 Rabbit Polyclonal Antibody

Product data:

Product Type:	Primary Antibodies
Applications:	WB
Recommended Dilution:	WB
Reactivity:	Human
Host:	Rabbit
Isotype:	IgG
Clonality:	Polyclonal
Immunogen:	The immunogen for anti-FBP2 antibody: synthetic peptide directed towards the middle region of human FBP2. Synthetic peptide located within the following region: YIIEQAGGLATTGTQPVLVDVKPEAIHQRVPLILGSPEDVQEYLTCVQKNQ
Formulation:	Liquid. Purified antibody supplied in 1x PBS buffer with 0.09% (w/v) sodium azide and 2% sucrose. <i>Note that this product is shipped as lyophilized powder to China customers.</i>
Purification:	Affinity Purified
Conjugation:	Unconjugated
Storage:	Store at -20°C as received.
Stability:	Stable for 12 months from date of receipt.
Predicted Protein Size:	37 kDa
Gene Name:	fructose-bisphosphatase 2
Database Link:	NP_003828 Entrez Gene 8789 Human O00757
Background:	This gene encodes a gluconeogenesis regulatory enzyme which catalyzes the hydrolysis of fructose 1,6-bisphosphate to fructose 6-phosphate and inorganic phosphate. [provided by RefSeq, Jul 2008]
Synonyms:	MGC142192
Note:	Immunogen Sequence Homology: Rat: 100%; Human: 100%; Mouse: 100%; Bovine: 100%; Dog: 93%; Pig: 93%; Horse: 93%; Rabbit: 93%; Guinea pig: 93%; Sheep: 80%

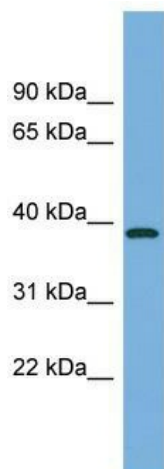


[View online »](#)

Protein Families: Druggable Genome

Protein Pathways: Fructose and mannose metabolism, Glycolysis / Gluconeogenesis, Insulin signaling pathway, Metabolic pathways, Pentose phosphate pathway

Product images:



WB Suggested Anti-FBP2 Antibody Titration: 0.2-1 ug/ml; Positive Control: Human Small Intestine