

## Product datasheet for TA346499

### SRRD Rabbit Polyclonal Antibody

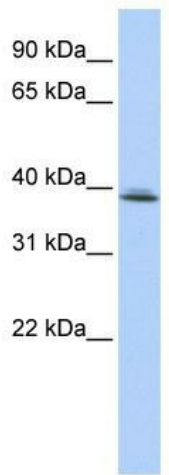
#### Product data:

Product Type:	Primary Antibodies
Applications:	WB
Recommended Dilution:	WB
Reactivity:	Human
Host:	Rabbit
Isotype:	IgG
Clonality:	Polyclonal
Immunogen:	The immunogen for anti-SRRD antibody: synthetic peptide directed towards the middle region of human SRRD. Synthetic peptide located within the following region: DIFNDTSVHWFPVQKLEQLSIDIWEFREEPDYQDCEDLEIIRNKREDPSA
Formulation:	Liquid. Purified antibody supplied in 1x PBS buffer with 0.09% (w/v) sodium azide and 2% sucrose. <i>Note that this product is shipped as lyophilized powder to China customers.</i>
Purification:	Affinity Purified
Conjugation:	Unconjugated
Storage:	Store at -20°C as received.
Stability:	Stable for 12 months from date of receipt.
Predicted Protein Size:	38 kDa
Gene Name:	SRR1 domain containing
Database Link:	<a href="#">NP_001013716</a> <a href="#">Entrez Gene 402055 Human</a> <a href="#">Q9UH36</a>
Background:	May be involved in a circadian clock input pathway.
Synonyms:	HC; HCC; SRR1L
Note:	Immunogen Sequence Homology: Human: 100%; Pig: 86%



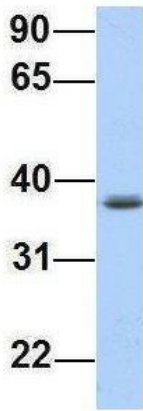
[View online »](#)

Product images:



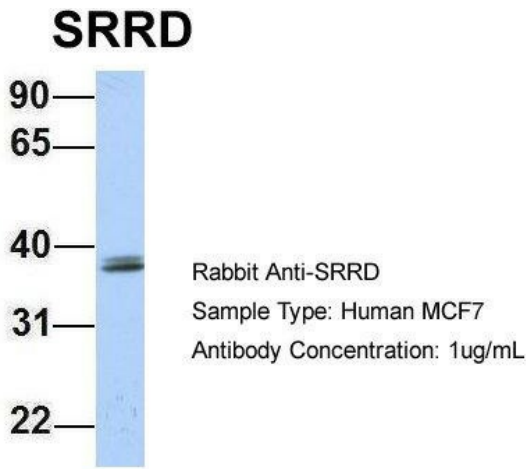
WB Suggested Anti-SRRD Antibody Titration: 0.2-1 ug/ml; ELISA Titer: 1: 312500; Positive Control: HepG2 cell lysate

**SRRD**

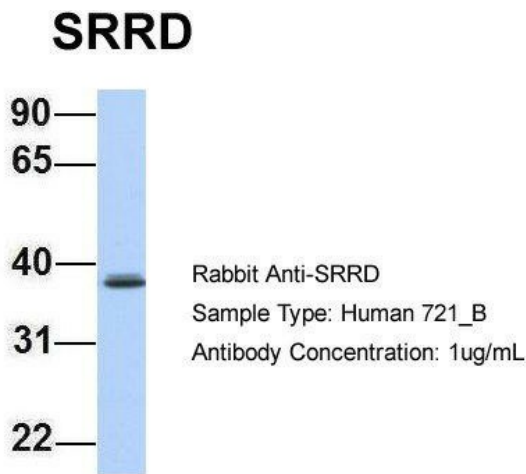


Rabbit Anti-SRRD  
 Sample Type: Human Jurkat  
 Antibody Concentration: 1ug/mL

Host: Rabbit; Target Name: SRRD; Sample Tissue: Jurkat; Antibody Dilution: 1.0 ug/ml.SRRD is supported by BioGPS gene expression data to be expressed in Jurkat



Host: Rabbit; Target Name: SRRD; Sample Tissue: MCF7; Antibody Dilution: 1.0 ug/ml. SRRD is supported by BioGPS gene expression data to be expressed in MCF7



Host: Rabbit; Target Name: SRRD; Sample Tissue: 721\_B; Antibody Dilution: 1.0 ug/ml. SRRD is supported by BioGPS gene expression data to be expressed in 721\_B