

Product datasheet for **TA346492**

Beta Arrestin 2 (ARRB2) Rabbit Polyclonal Antibody

Product data:

Product Type:	Primary Antibodies
Applications:	IHC, WB
Recommended Dilution:	WB, IHC
Reactivity:	Human, Mouse
Host:	Rabbit
Isotype:	IgG
Clonality:	Polyclonal
Immunogen:	The immunogen for anti-ARRB2 antibody: synthetic peptide directed towards the middle region of human ARRB2. Synthetic peptide located within the following region: RLVIRKVQFAPEKPGPQPSAETTRHFLMSDRSLHLEASLDKELYHGEPL
Formulation:	Liquid. Purified antibody supplied in 1x PBS buffer with 0.09% (w/v) sodium azide and 2% sucrose. <i>Note that this product is shipped as lyophilized powder to China customers.</i>
Purification:	Affinity Purified
Conjugation:	Unconjugated
Storage:	Store at -20°C as received.
Stability:	Stable for 12 months from date of receipt.
Predicted Protein Size:	46 kDa
Gene Name:	arrestin beta 2
Database Link:	NP_945355 Entrez Gene 216869 Mouse Entrez Gene 409 Human P32121



[View online »](#)

Background:

Members of arrestin/beta-arrestin protein family are thought to participate in agonist-mediated desensitization of G-protein-coupled receptors and cause specific dampening of cellular responses to stimuli such as hormones, neurotransmitters, or sensory signals. Arrestin beta 2, like arrestin beta 1, was shown to inhibit beta-adrenergic receptor function in vitro. It is expressed at high levels in the central nervous system and may play a role in the regulation of synaptic receptors. Besides the brain, a cDNA for arrestin beta 2 was isolated from thyroid gland, and thus it may also be involved in hormone-specific desensitization of TSH receptors. Multiple alternatively spliced transcript variants encoding different isoforms have been found for this gene. [provided by RefSeq, Mar 2012]

Synonyms:

ARB2; ARR2; BARR2

Note:

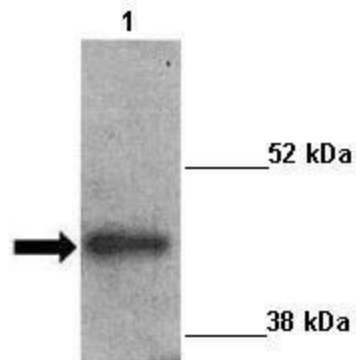
Immunogen Sequence Homology: Dog: 100%; Pig: 100%; Rat: 100%; Horse: 100%; Human: 100%; Bovine: 100%; Rabbit: 100%; Mouse: 93%; Zebrafish: 93%; Guinea pig: 86%

Protein Families:

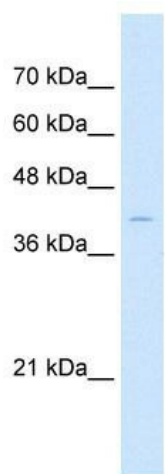
Druggable Genome

Protein Pathways:

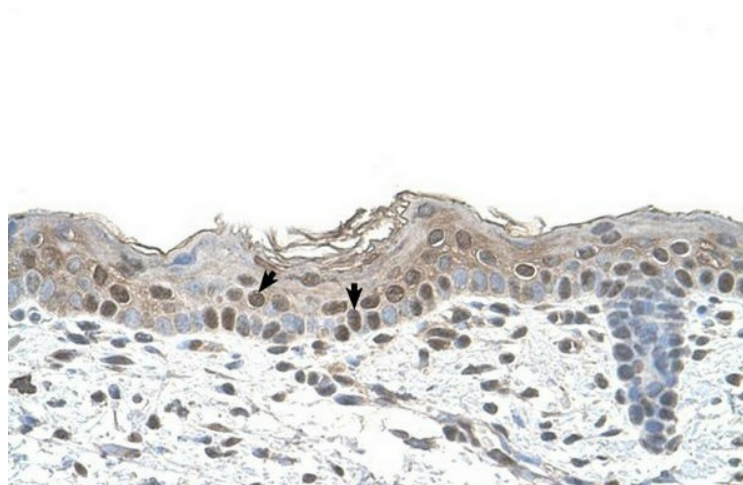
Chemokine signaling pathway, Endocytosis, MAPK signaling pathway, Olfactory transduction

Product images:**BETA-ARRESTIN**

Sample Type: Lane 1: 20ug mouse left ventricle heart lysate
Primary Antibody Dilution: 1: 1000
Secondary Antibody: Anti-rabbit-HRP
Secondary Antibody Dilution: 1: 5000



Sample Type: HepG2 cell lysate; Antibody concentration: 1.0 ug/ml; Gel concentration: 12%.ARRB2 is supported by BioGPS gene expression data to be expressed in HepG2



Human Skin