

## Product datasheet for **TA346453**

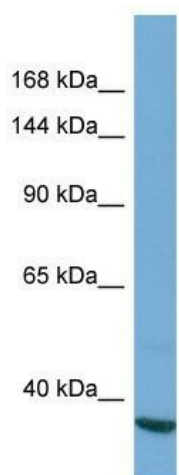
### SARDH Rabbit Polyclonal Antibody

#### Product data:

Product Type:	Primary Antibodies
Applications:	WB
Recommended Dilution:	WB
Reactivity:	Human
Host:	Rabbit
Isotype:	IgG
Clonality:	Polyclonal
Immunogen:	The immunogen for Anti-SARDH antibody is: synthetic peptide directed towards the C-terminal region of Human SARDH. Synthetic peptide located within the following region: SLSIEKGYRHHADLRPDDSPLEAGLAFTCKLKSPVPFLGREALEQQRAA
Formulation:	Liquid. Purified antibody supplied in 1x PBS buffer with 0.09% (w/v) sodium azide and 2% sucrose. <i>Note that this product is shipped as lyophilized powder to China customers.</i>
Purification:	Affinity Purified
Conjugation:	Unconjugated
Storage:	Store at -20°C as received.
Stability:	Stable for 12 months from date of receipt.
Predicted Protein Size:	40 kDa
Gene Name:	sarcosine dehydrogenase
Database Link:	<a href="#">NP_001128179</a> <a href="#">Entrez Gene 1757 Human</a> <a href="#">Q9UL12</a>
Background:	The function of this protein remains unknown.
Synonyms:	BPR-2; DMGDHL1; SAR; SARD; SDH
Note:	Immunogen Sequence Homology: Dog: 100%; Pig: 100%; Human: 100%; Mouse: 100%; Rat: 93%; Bovine: 93%; Rabbit: 93%; Zebrafish: 93%; Guinea pig: 93%
Protein Pathways:	Glycine, serine and threonine metabolism, Metabolic pathways



[View online »](#)

**Product images:**

Host: Rabbit; Target Name: SARDH; Sample  
Tissue: Jurkat Whole cell lysates; Antibody  
Dilution: 1.0 ug/ml