

Product datasheet for **TA346427**

Lgals4 Rabbit Polyclonal Antibody

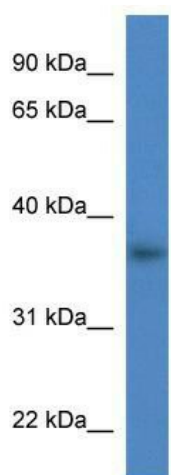
Product data:

Product Type:	Primary Antibodies
Applications:	WB
Recommended Dilution:	WB
Reactivity:	Mouse
Host:	Rabbit
Isotype:	IgG
Clonality:	Polyclonal
Immunogen:	The immunogen for anti-Lgals4 antibody: synthetic peptide corresponding to a region of Mouse. Synthetic peptide located within the following region: VGSSGDIALHLNPRIGDSVVRNSFMNGSWGAEERKVAYNPFPGPGQFFDLS
Formulation:	Liquid. Purified antibody supplied in 1x PBS buffer with 0.09% (w/v) sodium azide and 2% sucrose. <i>Note that this product is shipped as lyophilized powder to China customers.</i>
Purification:	Affinity Purified
Conjugation:	Unconjugated
Storage:	Store at -20°C as received.
Stability:	Stable for 12 months from date of receipt.
Predicted Protein Size:	36 kDa
Gene Name:	lectin, galactose binding, soluble 4
Database Link:	NP_034836 Entrez Gene 16855 Mouse Q8K419
Background:	Lgals4 binds lactose and a related range of sugars.
Synonyms:	GAL4; galectin-4; L36LBP
Note:	Immunogen Sequence Homology: Human: 100%; Pig: 93%; Mouse: 93%; Bovine: 93%; Rabbit: 93%; Zebrafish: 92%; Rat: 90%; Dog: 86%; Horse: 86%; Guinea pig: 79%



[View online »](#)

Product images:



WB Suggested Anti-Lgals4 Antibody Titration: 0.2-1 ug/ml; ELISA Titer: 1: 1562500; Positive Control: Mouse Brain