

Product datasheet for **TA346395**

GFPT2 Rabbit Polyclonal Antibody

Product data:

Product Type:	Primary Antibodies
Applications:	WB
Recommended Dilution:	WB
Reactivity:	Human
Host:	Rabbit
Isotype:	IgG
Clonality:	Polyclonal
Immunogen:	The immunogen for anti-GFPT2 antibody: synthetic peptide directed towards the middle region of human GFPT2. Synthetic peptide located within the following region: TARQGRPIILCSKDDTESSKFAYKTIELPHTVDCLQGILSVIPLQLLSFH
Formulation:	Liquid. Purified antibody supplied in 1x PBS buffer with 0.09% (w/v) sodium azide and 2% sucrose. <i>Note that this product is shipped as lyophilized powder to China customers.</i>
Purification:	Affinity Purified
Conjugation:	Unconjugated
Storage:	Store at -20°C as received.
Stability:	Stable for 12 months from date of receipt.
Predicted Protein Size:	77 kDa
Gene Name:	glutamine-fructose-6-phosphate transaminase 2
Database Link:	NP_005101 Entrez Gene 9945 Human O94808
Background:	GFPT2 controls the flux of glucose into the hexosamine pathway. GFPT2 is most likely involved in regulating the availability of precursors for N- and O-linked glycosylation of proteins.
Synonyms:	GFAT2
Note:	Immunogen Sequence Homology: Pig: 100%; Rat: 100%; Horse: 100%; Human: 100%; Mouse: 100%; Bovine: 100%; Guinea pig: 100%; Dog: 93%; Rabbit: 93%

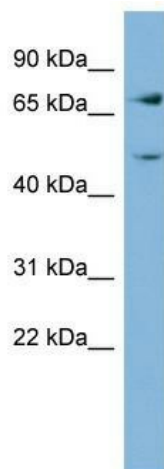


[View online »](#)

Protein Families: Protease

Protein Pathways: Alanine, aspartate and glutamate metabolism, Amino sugar and nucleotide sugar metabolism, Metabolic pathways

Product images:



WB Suggested Anti-GFPT2 Antibody Titration: 0.2-1 ug/ml; ELISA Titer: 1: 312500; Positive Control: HT1080 cell lysate; GFPT2 is supported by BioGPS gene expression data to be expressed in HT1080