

Product datasheet for **TA346379**

EPB41 Rabbit Polyclonal Antibody

Product data:

Product Type:	Primary Antibodies
Applications:	WB
Recommended Dilution:	WB
Reactivity:	Human
Host:	Rabbit
Isotype:	IgG
Clonality:	Polyclonal
Immunogen:	The immunogen for anti-EPB41 antibody: synthetic peptide directed towards the middle region of human EPB41. Synthetic peptide located within the following region: QVAEGGVLDASAKKTVVPKAQKQKTVKAEVKKKEDEPPEQAEPEPTEAWKKK
Formulation:	Liquid. Purified antibody supplied in 1x PBS buffer with 0.09% (w/v) sodium azide and 2% sucrose. <i>Note that this product is shipped as lyophilized powder to China customers.</i>
Purification:	Affinity Purified
Conjugation:	Unconjugated
Storage:	Store at -20°C as received.
Stability:	Stable for 12 months from date of receipt.
Predicted Protein Size:	66 kDa
Gene Name:	erythrocyte membrane protein band 4.1
Database Link:	NP_004428 Entrez Gene 2035 Human P11171
Background:	Elliptocytosis is a hematologic disorder characterized by elliptically shaped erythrocytes and a variable degree of hemolytic anemia. Inherited as an autosomal dominant, elliptocytosis results from mutation in any one of several genes encoding proteins of
Synonyms:	4.1R; EL1; HE
Note:	Immunogen Sequence Homology: Pig: 100%; Horse: 100%; Human: 100%; Rat: 93%; Bovine: 83%; Mouse: 79%; Rabbit: 79%; Guinea pig: 79%; Yeast: 75%

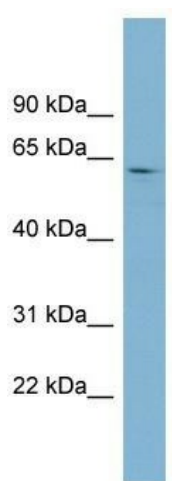


[View online »](#)

Protein Families: Druggable Genome

Protein Pathways: Tight junction

Product images:



WB Suggested Anti-EPB41 Antibody Titration: 0.2-1 ug/ml; ELISA Titer: 1: 62500; Positive Control: Human Thymus