

Product datasheet for **TA346369**

CES2 Rabbit Polyclonal Antibody

Product data:

| | |
|-------------------------|---|
| Product Type: | Primary Antibodies |
| Applications: | IHC, WB |
| Recommended Dilution: | WB |
| Reactivity: | Human |
| Host: | Rabbit |
| Isotype: | IgG |
| Clonality: | Polyclonal |
| Immunogen: | The immunogen for anti-CES2 antibody: synthetic peptide directed towards the C terminal of human CES2. Synthetic peptide located within the following region: HWPLFDQEEQYLQLNLQPAVGRALKAHRLQFWKKALPQKIQELEEPEERH |
| Formulation: | Liquid. Purified antibody supplied in 1x PBS buffer with 0.09% (w/v) sodium azide and 2% sucrose. <i>Note that this product is shipped as lyophilized powder to China customers.</i> |
| Purification: | Affinity Purified |
| Conjugation: | Unconjugated |
| Storage: | Store at -20°C as received. |
| Stability: | Stable for 12 months from date of receipt. |
| Predicted Protein Size: | 69 kDa |
| Gene Name: | carboxylesterase 2 |
| Database Link: | NP_003860 Entrez Gene 8824 Human O00748 |



[View online »](#)

Background: Carboxylesterase 2 is a member of a large multigene family. The enzymes are responsible for the hydrolysis of ester- and amide-bond-containing drugs such as cocaine and heroin. They also hydrolyze long-chain fatty acid esters and thioesters. The specific function of this enzyme has not yet been determined; however, it is speculated that carboxylesterases may play a role in lipid metabolism and/or the blood-brain barrier system. Carboxylesterase 2 is a member of a large multigene family. The enzymes encoded by these genes are responsible for the hydrolysis of ester- and amide-bond-containing drugs such as cocaine and heroin. They also hydrolyze long-chain fatty acid esters and thioesters. The specific function of this enzyme has not yet been determined; however, it is speculated that carboxylesterases may play a role in lipid metabolism and/or the blood-brain barrier system. Two alternatively spliced transcript variants encoding distinct isoforms have been found for this gene.

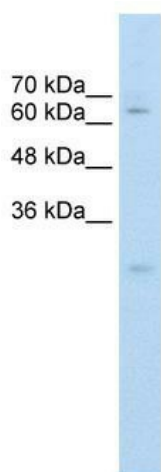
Synonyms: CE-2; CES2A1; iCE; PCE-2

Note: Immunogen Sequence Homology: Human: 100%; Dog: 83%; Pig: 83%; Rat: 83%; Mouse: 83%; Guinea pig: 83%

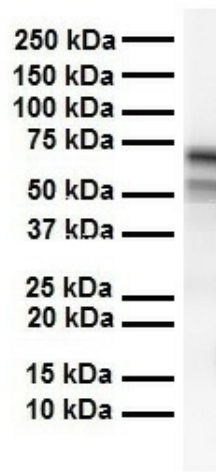
Protein Families: Druggable Genome

Protein Pathways: Drug metabolism - other enzymes

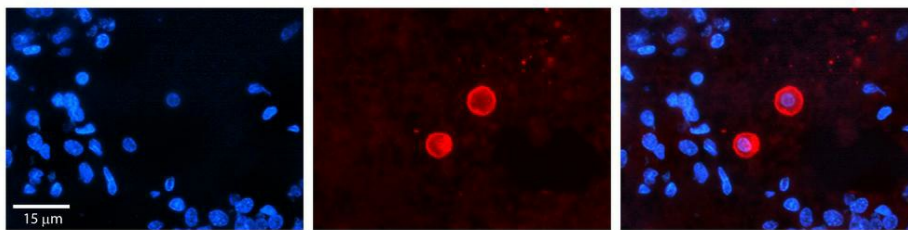
Product images:



WB Suggested Anti-CES2 Antibody Titration: 0.2-1 ug/ml; Positive Control: HepG2 cell lysate. CES2 is strongly supported by BioGPS gene expression data to be expressed in Human HepG2 cells



CES2 antibody in human heart using western blot



Rabbit Anti-CES2 Antibody; Formalin Fixed Paraffin Embedded Tissue: Human Pineal Tissue; Observed Staining: Cytoplasmic in pinealocytes; Primary Antibody Concentration: 1: 100; Other Working Concentrations: 1/600; Secondary Antibody: Donkey anti-Rabbit-Cy3; Secondary Antibody Concentration: 1: 200; Magnification: 20X; Exposure Time: 0.5–2.0 sec;