

Product datasheet for **TA346360**

Retinol dehydrogenase 16 (RDH16) Rabbit Polyclonal Antibody

Product data:

Product Type:	Primary Antibodies
Applications:	WB
Recommended Dilution:	WB
Reactivity:	Human
Host:	Rabbit
Isotype:	IgG
Clonality:	Polyclonal
Immunogen:	The immunogen for anti-RDH16 antibody: synthetic peptide directed towards the N terminal of human RDH16. Synthetic peptide located within the following region: WLYLAVFVGLYLLHWYRERQVLSHLRDKYVFITGCDSGFGKLLARQLDA
Formulation:	Liquid. Purified antibody supplied in 1x PBS buffer with 0.09% (w/v) sodium azide and 2% sucrose. <i>Note that this product is shipped as lyophilized powder to China customers.</i>
Purification:	Affinity Purified
Conjugation:	Unconjugated
Storage:	Store at -20°C as received.
Stability:	Stable for 12 months from date of receipt.
Predicted Protein Size:	36 kDa
Gene Name:	retinol dehydrogenase 16 (all-trans)
Database Link:	NP_003699 Entrez Gene 8608 Human O75452
Background:	RDH16 is an oxidoreductase with a preference for NAD. It oxidizes all-trans-retinol and 13-cis-retinol to the corresponding aldehydes. RDH16 has higher activity towards CRBP-bound retinol than with free retinol. It also oxidizes androstanediol and androsterone to dihydrotestosterone and androstanedione. RDH16 can also catalyze the reverse reaction.
Synonyms:	RODH-4; SDR9C8

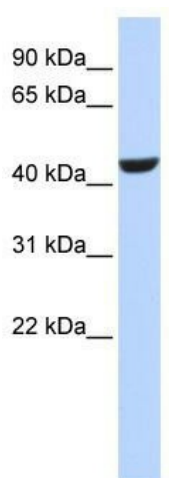


[View online »](#)

Note: Immunogen Sequence Homology: Human: 100%; Pig: 93%; Dog: 86%; Rat: 86%; Horse: 86%; Mouse: 86%; Bovine: 86%; Guinea pig: 86%

Protein Pathways: Metabolic pathways, Retinol metabolism

Product images:



WB Suggested Anti-RDH16 Antibody Titration:
0.2-1 ug/ml; ELISA Titer: 1: 312500; Positive
Control: 721_B cell lysate