

## Product datasheet for **TA346274**

### Prostatic Acid Phosphatase (ACPP) Rabbit Polyclonal Antibody

#### Product data:

Product Type:	Primary Antibodies
Applications:	WB
Recommended Dilution:	WB
Reactivity:	Human
Host:	Rabbit
Isotype:	IgG
Clonality:	Polyclonal
Immunogen:	The immunogen for anti-ACPP antibody: synthetic peptide directed towards the middle region of human ACPP. Synthetic peptide located within the following region: CESVHNFTLPSWATEDTMTKLRELSELSLLSLYGIHKQKEKSRLQGGVLV
Formulation:	Liquid. Purified antibody supplied in 1x PBS buffer with 0.09% (w/v) sodium azide and 2% sucrose. <i>Note that this product is shipped as lyophilized powder to China customers.</i>
Purification:	Affinity Purified
Conjugation:	Unconjugated
Storage:	Store at -20°C as received.
Stability:	Stable for 12 months from date of receipt.
Predicted Protein Size:	41 kDa
Gene Name:	acid phosphatase, prostate
Database Link:	<a href="#">NP_001090</a> <a href="#">Entrez Gene 55 Human</a> <a href="#">P15309</a>
Background:	This gene encodes an enzyme that catalyzes the conversion of orthophosphoric monoester to alcohol and orthophosphate. It is synthesized under androgen regulation and is secreted by the epithelial cells of the prostate gland. An alternatively spliced transcript variant encoding a longer isoform has been found for this gene. This isoform contains a transmembrane domain and is localized in the plasma membrane-endosomal-lysosomal pathway.



[View online »](#)

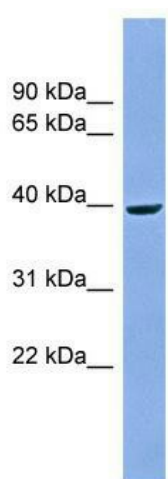
**Synonyms:** 5 -NT; 5'-NT; ACP-3; ACP3

**Note:** Immunogen Sequence Homology: Dog: 100%; Pig: 100%; Rat: 100%; Human: 100%; Mouse: 100%; Bovine: 100%; Rabbit: 100%; Guinea pig: 100%; Horse: 93%

**Protein Families:** Druggable Genome, Phosphatase, Transmembrane

**Protein Pathways:** Riboflavin metabolism

**Product images:**



WB Suggested Anti-ACPP Antibody Titration: 0.2-1 ug/ml; ELISA Titer: 1: 62500; Positive Control: NCI-H226 cell lysate