

Product datasheet for **TA346264**

ALAS2 Rabbit Polyclonal Antibody

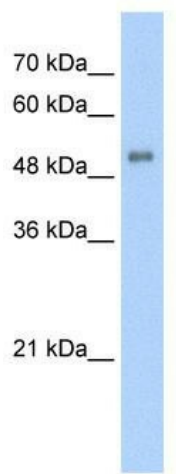
Product data:

Product Type:	Primary Antibodies
Applications:	IHC, WB
Recommended Dilution:	WB, IHC
Reactivity:	Human
Host:	Rabbit
Isotype:	IgG
Clonality:	Polyclonal
Immunogen:	The immunogen for anti-ALAS2 antibody: synthetic peptide directed towards the N terminal of human ALAS2. Synthetic peptide located within the following region: VFKTVNRWADAYPFAQHFSEASVASKDVSVWCSNDYLGMSRHPQVLQATQ
Formulation:	Liquid. Purified antibody supplied in 1x PBS buffer with 0.09% (w/v) sodium azide and 2% sucrose. <i>Note that this product is shipped as lyophilized powder to China customers.</i>
Purification:	Affinity Purified
Conjugation:	Unconjugated
Storage:	Store at -20°C as received.
Stability:	Stable for 12 months from date of receipt.
Predicted Protein Size:	57 kDa
Gene Name:	5'-aminolevulinate synthase 2
Database Link:	NP_001033056 Entrez Gene 212 Human P22557

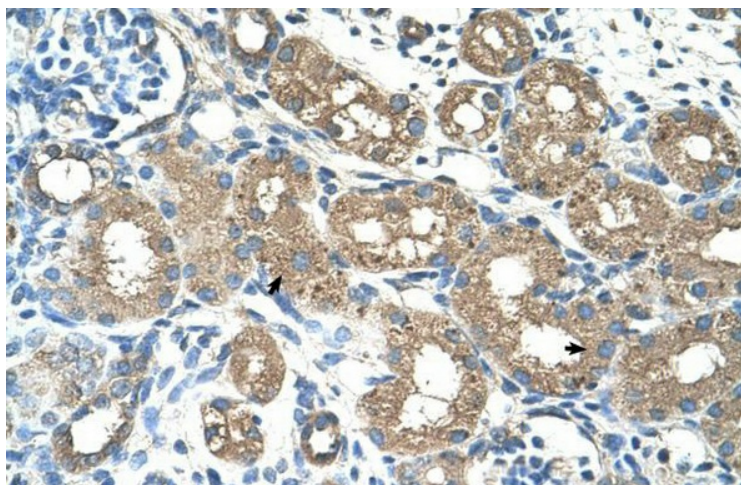


[View online »](#)

Background:	ALAS2 specifies an erythroid-specific mitochondrially located enzyme. The protein catalyzes the first step in the heme biosynthetic pathway. Defects in its gene cause X-linked pyridoxine-responsive sideroblastic anemia. The product of this gene specifies an erythroid-specific mitochondrially located enzyme. The encoded protein catalyzes the first step in the heme biosynthetic pathway. Defects in this gene cause X-linked pyridoxine-responsive sideroblastic anemia. Alternatively spliced transcript variants encoding different isoforms have been identified.
Synonyms:	ALAS-E; ALASE; ANH1; ASB; SIDBA1; XLDPP; XLEPP; XLSA
Note:	Immunogen Sequence Homology: Human: 100%; Dog: 93%; Pig: 93%; Rat: 93%; Horse: 93%; Mouse: 93%; Rabbit: 93%; Guinea pig: 93%; Bovine: 86%
Protein Families:	Druggable Genome
Protein Pathways:	Glycine, serine and threonine metabolism, Metabolic pathways, Porphyrin and chlorophyll metabolism

Product images:

WB Suggested Anti-ALAS2 Antibody Titration: 5.0 ug/ml; Positive Control: Jurkat cell lysate



Rabbit Anti-ALAS2 Antibody; Paraffin Embedded Tissue: Human Kidney; Cellular Data: Epithelial cells of renal tubule; Antibody Concentration: 4.0-8.0 ug/ml; Magnification: 400X