

Product datasheet for **TA346193**

ABCB4 Rabbit Polyclonal Antibody

Product data:

Product Type:	Primary Antibodies
Applications:	WB
Recommended Dilution:	WB
Reactivity:	Human
Host:	Rabbit
Isotype:	IgG
Clonality:	Polyclonal
Immunogen:	The immunogen for anti-ABCB4 antibody: synthetic peptide directed towards the N terminal of human ABCB4. Synthetic peptide located within the following region: AGAVAAEEALGAIRTVIAFGGQNKELERYQKHLENAKEIGIKKAISANISM
Formulation:	Liquid. Purified antibody supplied in 1x PBS buffer with 0.09% (w/v) sodium azide and 2% sucrose. <i>Note that this product is shipped as lyophilized powder to China customers.</i>
Purification:	Affinity Purified
Conjugation:	Unconjugated
Storage:	Store at -20°C as received.
Stability:	Stable for 12 months from date of receipt.
Predicted Protein Size:	141 kDa
Gene Name:	ATP binding cassette subfamily B member 4
Database Link:	NP_000434 Entrez Gene 5244 Human P21439



[View online »](#)

Background:

ABCB4, a membrane-associated protein, is a member of the superfamily of ATP-binding cassette (ABC) transporters. ABC proteins transport various molecules across extra- and intra-cellular membranes. This protein is a member of the MDR/TAP subfamily. Members of the MDR/TAP subfamily are involved in multidrug resistance as well as antigen presentation. ABCB4 is a full transporter and member of the p-glycoprotein family of membrane proteins with phosphatidylcholine as its substrate. The function of this protein has not yet been determined; however, it may involve transport of phospholipids from liver hepatocytes into bile. The membrane-associated protein encoded by this gene is a member of the superfamily of ATP-binding cassette (ABC) transporters. ABC proteins transport various molecules across extra- and intra-cellular membranes. ABC genes are divided into seven distinct subfamilies (ABC1, MDR/TAP, MRP, ALD, OABP, GCN20, White). This protein is a member of the MDR/TAP subfamily. Members of the MDR/TAP subfamily are involved in multidrug resistance as well as antigen presentation. This gene encodes a full transporter and member of the p-glycoprotein family of membrane proteins with phosphatidylcholine as its substrate. The function of this protein has not yet been determined; however, it may involve transport of phospholipids from liver hepatocytes into bile. Alternative splicing of this gene results in several products of undetermined function.

Synonyms:

3; ABC21; GBD1; ICP3; MDR2; MDR3; PFIC-3; PGY3

Note:

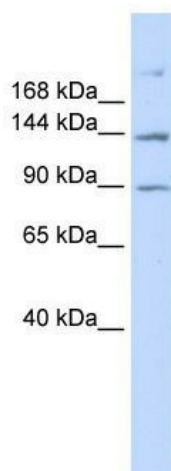
Immunogen Sequence Homology: Rat: 100%; Human: 100%; Mouse: 100%; Rabbit: 100%; Pig: 93%; Bovine: 86%; Dog: 77%; Horse: 77%; Sheep: 77%; Guinea pig: 77%

Protein Families:

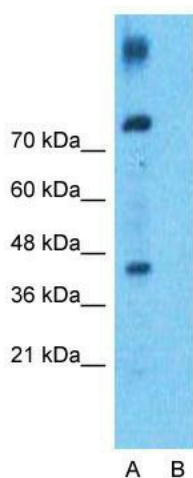
Druggable Genome, Transmembrane

Protein Pathways:

ABC transporters

Product images:

WB Suggested Anti-ABCB4 Antibody Titration: 0.2-1 ug/ml; ELISA Titer: 1: 312500; Positive Control: 293T cell lysate



Anti-ABCB4 Western Blot & Peptide Block Validation

Lysate: 293T Cell

Lane A: Primary Antibody
Lane B: Primary Antibody + Blocking Peptide

Primary Antibody Concentration: 1.0 μ g/ml
Peptide Concentration: 5.0 μ g/ml
Lysate Quantity: 25 μ g/lane
Gel Concentration: 12%

Host: Rabbit; Target Name: ABCB4; Sample Tissue: 293T Whole Cell; Lane A: Primary Antibody; Lane B: Primary Antibody + Blocking Peptide; Primary Antibody Concentration: 1 ug/ml; Peptide Concentration: 5 ug/ml; Lysate Quantity: 25 ug/lane/Lane; Gel Concentration: 0.12