

## Product datasheet for **TA346165**

### HMGCL Rabbit Polyclonal Antibody

#### Product data:

Product Type:	Primary Antibodies
Applications:	WB
Recommended Dilution:	WB
Reactivity:	Human
Host:	Rabbit
Isotype:	IgG
Clonality:	Polyclonal
Immunogen:	The immunogen for anti-HMGCL antibody: synthetic peptide directed towards the N terminal of human HMGCL. Synthetic peptide located within the following region: WVPQMGDHTTEVLKGIQKFPGINYPVLTPLKGFEEAAVAAGAKEVWIFGAA
Formulation:	Liquid. Purified antibody supplied in 1x PBS buffer with 0.09% (w/v) sodium azide and 2% sucrose. <i>Note that this product is shipped as lyophilized powder to China customers.</i>
Purification:	Affinity Purified
Conjugation:	Unconjugated
Storage:	Store at -20°C as received.
Stability:	Stable for 12 months from date of receipt.
Predicted Protein Size:	36 kDa
Gene Name:	3-hydroxymethyl-3-methylglutaryl-CoA lyase
Database Link:	<a href="#">NP_000182</a> <a href="#">Entrez Gene 3155 Human P35914</a>
Background:	The deficiency of HMGCL is related to an autosomal recessive branched chain organic aciduria.
Synonyms:	HL
Note:	Immunogen Sequence Homology: Dog: 100%; Pig: 100%; Rat: 100%; Horse: 100%; Human: 100%; Mouse: 100%; Guinea pig: 100%; Bovine: 93%; Rabbit: 92%; Zebrafish: 91%

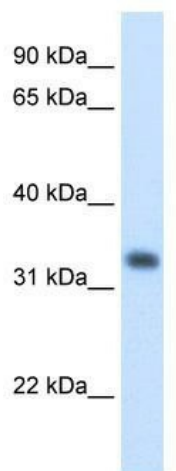


[View online »](#)

Protein Families: Druggable Genome

Protein Pathways: Butanoate metabolism, Metabolic pathways, Synthesis and degradation of ketone bodies, Valine, leucine and isoleucine degradation

### Product images:



WB Suggested Anti-HMGCL Antibody Titration:  
1.25 ug/ml; Positive Control: Human Liver