

## Product datasheet for TA346121

### SDS Rabbit Polyclonal Antibody

#### Product data:

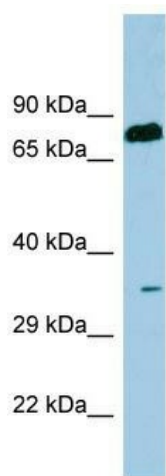
Product Type:	Primary Antibodies
Applications:	WB
Recommended Dilution:	WB
Reactivity:	Human
Host:	Rabbit
Isotype:	IgG
Clonality:	Polyclonal
Immunogen:	The immunogen for anti-SDS antibody: synthetic peptide directed towards the N terminal of human SDS. Synthetic peptide located within the following region: AAAYAARQLGVPATIVVPSTTPALTIERLKNEGATVKVVGELLDEAFELA
Formulation:	Liquid. Purified antibody supplied in 1x PBS buffer with 0.09% (w/v) sodium azide and 2% sucrose. <i>Note that this product is shipped as lyophilized powder to China customers.</i>
Purification:	Affinity Purified
Conjugation:	Unconjugated
Storage:	Store at -20°C as received.
Stability:	Stable for 12 months from date of receipt.
Predicted Protein Size:	34 kDa
Gene Name:	serine dehydratase
Database Link:	<a href="#">NP_006834</a> <a href="#">Entrez Gene 10993 Human P20132</a>
Background:	This gene encodes one of three enzymes that are involved in metabolizing serine and glycine. L-serine dehydratase converts L-serine to pyruvate and ammonia and requires pyridoxal phosphate as a cofactor.
Synonyms:	SDH
Note:	Immunogen Sequence Homology: Rat: 100%; Human: 100%; Mouse: 100%; Pig: 93%; Horse: 93%; Bovine: 93%; Rabbit: 93%



[View online »](#)

**Protein Pathways:** Cysteine and methionine metabolism, Glycine, serine and threonine metabolism, Metabolic pathways

**Product images:**



WB Suggested Anti-SDS Antibody Titration: 0.2-1 ug/ml; ELISA Titer: 1: 312500; Positive Control: Human Thymus