

## Product datasheet for **TA346103**

### Cadherin 16 (CDH16) Rabbit Polyclonal Antibody

#### Product data:

Product Type:	Primary Antibodies
Applications:	IHC, WB
Recommended Dilution:	WB, IHC
Reactivity:	Human
Host:	Rabbit
Isotype:	IgG
Clonality:	Polyclonal
Immunogen:	The immunogen for anti-CDH16 antibody: synthetic peptide directed towards the N terminal of human CDH16. Synthetic peptide located within the following region: SDRDEPGTANSDLRFHILSQAPAQPSPDMFQLEPRLGALALSPKGSTSLD
Formulation:	Liquid. Purified antibody supplied in 1x PBS buffer with 0.09% (w/v) sodium azide and 2% sucrose. <i>Note that this product is shipped as lyophilized powder to China customers.</i>
Purification:	Affinity Purified
Conjugation:	Unconjugated
Storage:	Store at -20°C as received.
Stability:	Stable for 12 months from date of receipt.
Predicted Protein Size:	88 kDa
Gene Name:	cadherin 16
Database Link:	<a href="#">NP_004053</a> <a href="#">Entrez Gene 1014 Human O75309</a>



[View online »](#)

**Background:**

CDH16 is a member of the cadherin superfamily, which are calcium-dependent, membrane-associated glycoproteins. CDH16 consists of an extracellular domain containing 6 cadherin domains, a transmembrane region and a truncated cytoplasmic domain but lacks the prosequence and tripeptide HAV adhesion recognition sequence typical of most classical cadherins. Expression is exclusively in kidney, where the protein functions as the principal mediator of homotypic cellular recognition, playing a role in the morphogenic direction of tissue development. This gene is a member of the cadherin superfamily, genes encoding calcium-dependent, membrane-associated glycoproteins. Mapped to a previously identified cluster of cadherin genes on chromosome 16q22.1, the gene localizes with superfamily members CDH1, CDH3, CDH5, CDH8 and CDH11. The protein consists of an extracellular domain containing 6 cadherin domains, a transmembrane region and a truncated cytoplasmic domain but lacks the prosequence and tripeptide HAV adhesion recognition sequence typical of most classical cadherins. Expression is exclusively in kidney, where the protein functions as the principal mediator of homotypic cellular recognition, playing a role in the morphogenic direction of tissue development. Publication Note: This RefSeq record includes a subset of the publications that are available for this gene. Please see the Entrez Gene record to access additional publications.

**Synonyms:**

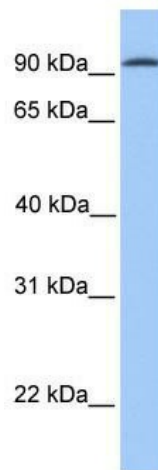
cadherin 16; kidney-specific cadherin; KSP-cadherin

**Note:**

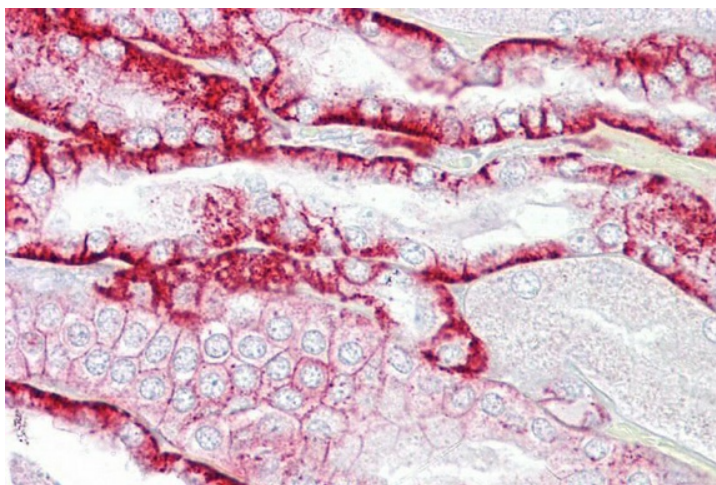
Immunogen Sequence Homology: Rat: 100%; Human: 100%; Pig: 93%; Horse: 93%; Bovine: 93%; Rabbit: 93%; Guinea pig: 93%; Mouse: 92%; Dog: 86%

**Protein Families:**

Transmembrane

**Product images:**

WB Suggested Anti-CDH16 Antibody Titration:  
0.2-1 ug/ml; Positive Control: Human brain



Immunohistochemistry with Kidney tissue at an antibody concentration of 5 ug/ml using anti-CDH16 antibody