

Product datasheet for **TA346086**

Glutathione Peroxidase 3 (GPX3) Rabbit Polyclonal Antibody

Product data:

Product Type:	Primary Antibodies
Applications:	IHC, WB
Recommended Dilution:	WB, IHC
Reactivity:	Human
Host:	Rabbit
Isotype:	IgG
Clonality:	Polyclonal
Immunogen:	The immunogen for anti-GPX3 antibody: synthetic peptide directed towards the N terminal of human GPX3. Synthetic peptide located within the following region: DCHGGISGTIYEYGALTIDGEEYIPFKQYAGKYVLFVNVASYUGLTGQYI
Formulation:	Liquid. Purified antibody supplied in 1x PBS buffer with 0.09% (w/v) sodium azide and 2% sucrose. <i>Note that this product is shipped as lyophilized powder to China customers.</i>
Purification:	Affinity Purified
Conjugation:	Unconjugated
Storage:	Store at -20°C as received.
Stability:	Stable for 12 months from date of receipt.
Predicted Protein Size:	25 kDa
Gene Name:	glutathione peroxidase 3
Database Link:	NP_002075 Entrez Gene 2878 Human P22352



[View online »](#)

Background: GPX3 belongs to the glutathione peroxidase family, which functions in the detoxification of hydrogen peroxide. It contains a selenocysteine (Sec) residue at its active site. The selenocysteine is encoded by the UGA codon, which normally signals translation termination. Glutathione peroxidase catalyzes the reduction of hydrogen peroxide, organic hydroperoxide, and lipid peroxides by reduced glutathione and functions in the protection of cells against oxidative damage. Human plasma glutathione peroxidase has been shown to be a selenium-containing enzyme. GPX3 expression appears to be tissue-specific.

Synonyms: GPx-P; GSHPx-3; GSHPx-P

Note: Immunogen Sequence Homology: Rat: 100%; Human: 100%; Mouse: 100%; Bovine: 100%; Pig: 93%; Dog: 83%; Guinea pig: 79%

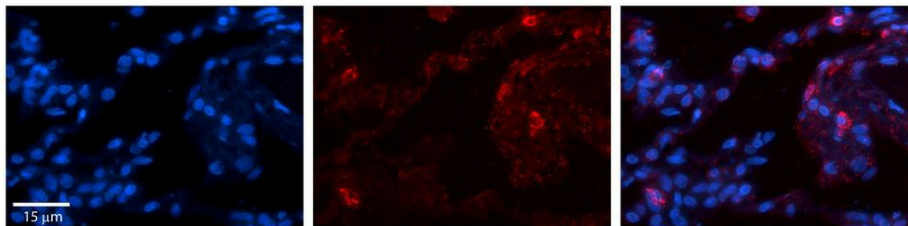
Protein Families: Druggable Genome, Secreted Protein

Protein Pathways: Arachidonic acid metabolism, Glutathione metabolism

Product images:



WB Suggested Anti-GPX3 Antibody Titration: 0.2-1 ug/ml; Positive Control: HepG2 cell lysate GPX3 is strongly supported by BioGPS gene expression data to be expressed in Human HepG2 cells



Rabbit Anti-GPX3 Antibody; Formalin Fixed Paraffin Embedded Tissue: Human Lung Tissue; Observed Staining: Membrane and cytoplasmic in alveolar type I & II cells; Primary Antibody Concentration: 1: 100; Other Working Concentrations: 1/600; Secondary Antibody: Donkey anti-Rabbit-Cy3; Secondary Antibody Concentration: 1: 200; Magnification: 20X; Exposure Time: 0.5–2.0 sec;