

## Product datasheet for **TA346062**

### SLC13A3 Rabbit Polyclonal Antibody

#### Product data:

Product Type:	Primary Antibodies
Applications:	WB
Recommended Dilution:	WB
Reactivity:	Human
Host:	Rabbit
Isotype:	IgG
Clonality:	Polyclonal
Immunogen:	The immunogen for anti-SLC13A3 antibody: synthetic peptide directed towards the C terminal of human SLC13A3. Synthetic peptide located within the following region: GLSVWIGGQLHPLENVPPALAVLLITVVIAFFTEFASNTATIIIFLPVLA
Formulation:	Liquid. Purified antibody supplied in 1x PBS buffer with 0.09% (w/v) sodium azide and 2% sucrose. <i>Note that this product is shipped as lyophilized powder to China customers.</i>
Purification:	Affinity Purified
Conjugation:	Unconjugated
Storage:	Store at -20°C as received.
Stability:	Stable for 12 months from date of receipt.
Predicted Protein Size:	62 kDa
Gene Name:	solute carrier family 13 member 3
Database Link:	<a href="#">NP_001011554</a> <a href="#">Entrez Gene 64849 Human</a> <a href="#">Q8WWT9</a>
Background:	Mammalian sodium-dicarboxylate cotransporters transport succinate and other Krebs cycle intermediates. They fall into 2 categories based on their substrate affinity: low affinity and high affinity. Both the low- and high-affinity transporters play an important role in the handling of citrate by the kidneys. SLC13A3 represents the high-affinity form.
Synonyms:	NADC3; SDCT2

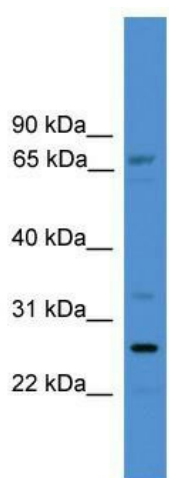


[View online »](#)

**Note:** Immunogen Sequence Homology: Dog: 100%; Pig: 100%; Rat: 100%; Horse: 100%; Human: 100%; Rabbit: 100%; Guinea pig: 100%; Mouse: 92%; Bovine: 92%

**Protein Families:** Druggable Genome, Transmembrane

**Product images:**



WB Suggested Anti-SLC13A3 Antibody Titration:  
0.2-1 ug/ml; ELISA Titer: 1: 312500; Positive  
Control: ACHN cell lysate