

## Product datasheet for **TA346061**

### SLC13A3 Rabbit Polyclonal Antibody

#### Product data:

Product Type:	Primary Antibodies
Applications:	IHC, WB
Recommended Dilution:	WB, IHC
Reactivity:	Human
Host:	Rabbit
Isotype:	IgG
Clonality:	Polyclonal
Immunogen:	The immunogen for anti-SLC13A3 antibody: synthetic peptide directed towards the middle region of human SLC13A3. Synthetic peptide located within the following region: GLSFRGWRKNKSEIRTNAEDRARAVIREEYQNLGPIKFAEQAVFILFCMF
Formulation:	Liquid. Purified antibody supplied in 1x PBS buffer with 0.09% (w/v) sodium azide and 2% sucrose. <i>Note that this product is shipped as lyophilized powder to China customers.</i>
Purification:	Affinity Purified
Conjugation:	Unconjugated
Storage:	Store at -20°C as received.
Stability:	Stable for 12 months from date of receipt.
Predicted Protein Size:	61 kDa
Gene Name:	solute carrier family 13 member 3
Database Link:	<a href="#">NP_001011554</a> <a href="#">Entrez Gene 64849 Human</a> <a href="#">Q8WWT9</a>



[View online »](#)

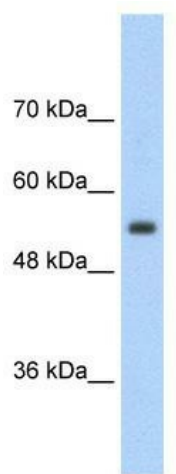
**Background:** Mammalian sodium-dicarboxylate cotransporters transport succinate and other Krebs cycle intermediates. They fall into 2 categories based on their substrate affinity: low affinity and high affinity. Both the low- and high-affinity transporters play an important role in the handling of citrate by the kidneys. SLC13A3 represents the high-affinity form. Mammalian sodium-dicarboxylate cotransporters transport succinate and other Krebs cycle intermediates. They fall into 2 categories based on their substrate affinity: low affinity and high affinity. Both the low- and high-affinity transporters play an important role in the handling of citrate by the kidneys. The protein encoded by this gene represents the high-affinity form. Alternatively spliced transcript variants encoding different isoforms have been found for this gene, although the full-length nature of some of them have not been characterized yet.

**Synonyms:** NADC3; SDCT2

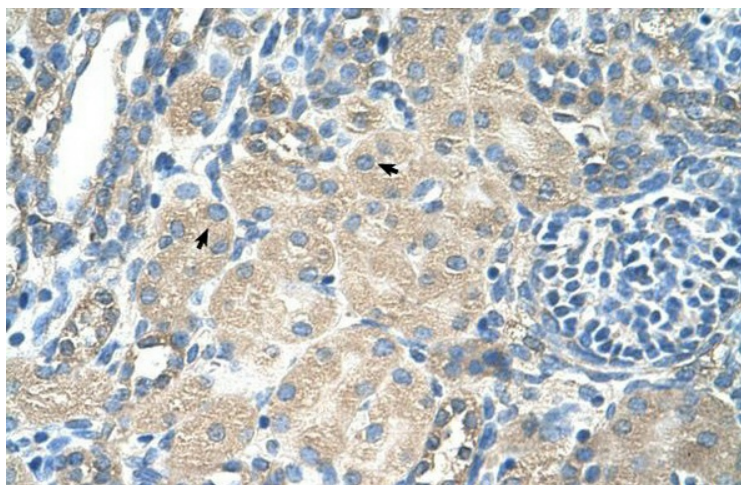
**Note:** Immunogen Sequence Homology: Human: 100%; Dog: 93%; Horse: 93%; Rabbit: 93%; Rat: 92%; Mouse: 92%; Bovine: 86%; Pig: 85%; Zebrafish: 77%

**Protein Families:** Druggable Genome, Transmembrane

### Product images:



WB Suggested Anti-SLC13A3 Antibody Titration: 2.5 ug/ml; Positive Control: Jurkat cell lysate



Rabbit Anti-SLC13A3 Antibody; Paraffin  
Embedded Tissue: Human Kidney; Cellular Data:  
Epithelial cells of renal tubule; Antibody  
Concentration: 4.0-8.0 ug/ml; Magnification: 400X