

Product datasheet for **TA346032**

SLC12A1 Rabbit Polyclonal Antibody

Product data:

Product Type:	Primary Antibodies
Applications:	IHC, WB
Recommended Dilution:	WB, IHC
Reactivity:	Human
Host:	Rabbit
Isotype:	IgG
Clonality:	Polyclonal
Immunogen:	The immunogen for anti-SLC12A1 antibody: synthetic peptide directed towards the N terminal of human SLC12A1. Synthetic peptide located within the following region: NEKKSRRGFFNYQASIFAENFGPRFTKGEGFFSVFAIFFPAATGILAGANI
Formulation:	Liquid. Purified antibody supplied in 1x PBS buffer with 0.09% (w/v) sodium azide and 2% sucrose. <i>Note that this product is shipped as lyophilized powder to China customers.</i>
Purification:	Affinity Purified
Conjugation:	Unconjugated
Storage:	Store at -20°C as received.
Stability:	Stable for 12 months from date of receipt.
Predicted Protein Size:	47 kDa
Gene Name:	solute carrier family 12 member 1
Database Link:	NP_000329 Entrez Gene 6557 Human Q13621
Background:	The sodium-potassium-chloride cotransporter isoform 2 is kidney-specific and is found on the apical membrane of the thick ascending limb of Henle's loop and the macula densa. It accounts for most of the NaCl resorption with the stoichiometry of 1Na:1K:2Cl and is sensitive to such diuretics as furosemide and bumetanide. Some Bartter-like syndromes result from defects in this gene.
Synonyms:	BSC1; NKCC2

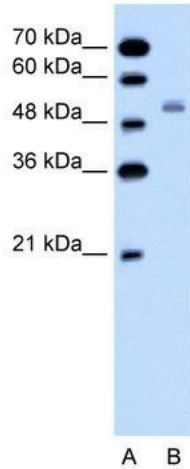


[View online »](#)

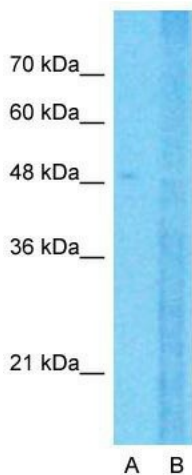
Note: Immunogen Sequence Homology: Dog: 100%; Pig: 100%; Rat: 100%; Horse: 100%; Human: 100%; Mouse: 100%; Bovine: 100%; Rabbit: 100%; Guinea pig: 93%

Protein Families: Druggable Genome, Transmembrane

Product images:



WB Suggested Anti-SLC12A1 Antibody Titration: 0.2-1 ug/ml; Positive Control: Jurkat cell lysate



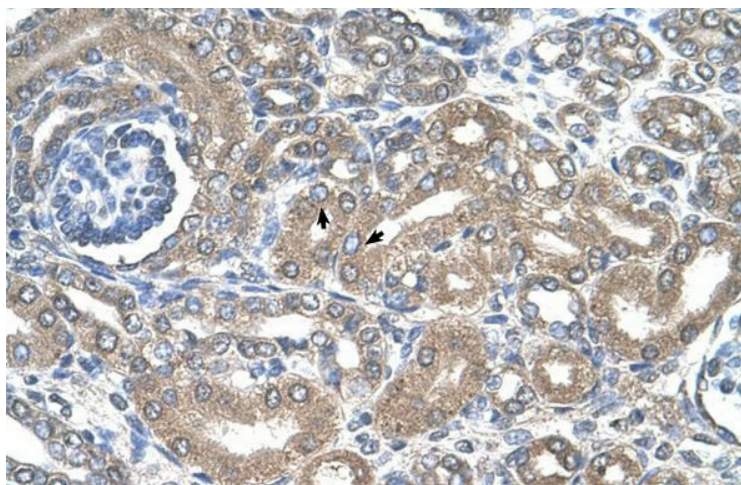
Anti-SLC12A1 Western Blot & Peptide Block Validation

Lysate: Jurkat Cell

Lane A: Primary Antibody
Lane B: Primary Antibody + Blocking Peptide

Primary Antibody Concentration: 1.0µg/ml
Peptide Concentration: 5.0µg/ml
Lysate Quantity: 25µg/lane
Gel Concentration: 12%

Host: Rabbit; Target Name: SLC12A1; Sample Tissue: Jurkat; Lane A: Primary Antibody; Lane B: Primary Antibody + Blocking Peptide; Primary Antibody Concentration: 1 ug/ml; Peptide Concentration: 5 ug/ml; Lysate Quantity: 25 ug/lane/lane; Gel Concentration: 0.12



Rabbit Anti-SLC12A1 Antibody; Paraffin
Embedded Tissue: Human Kidney; Cellular Data:
Epithelial cells of renal tubule; Antibody
Concentration: 4.0-8.0 ug/ml; Magnification: 400X